



Cité des Affaires

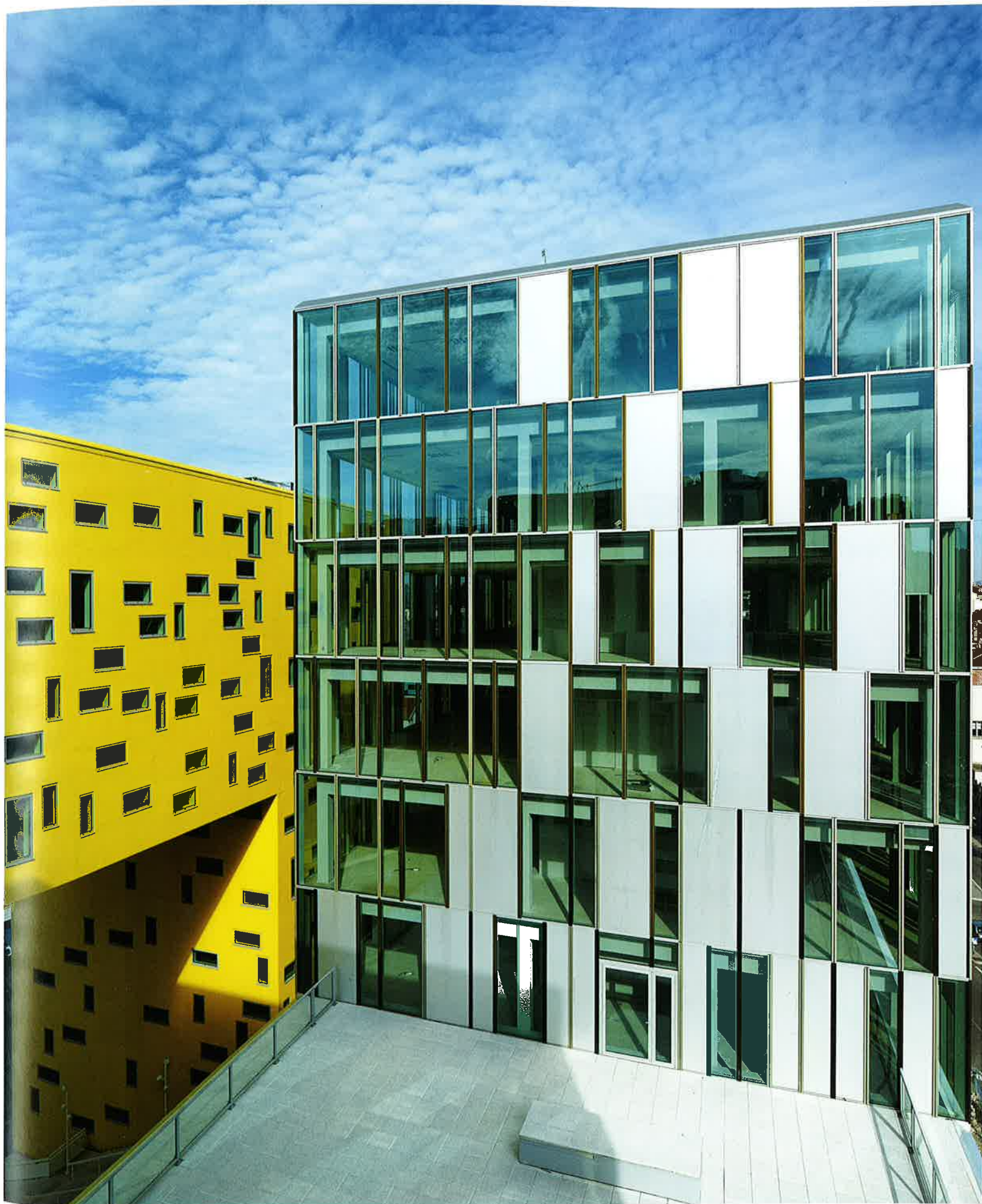
Saint-Etienne

↑ | Linear construction rears up and unfolds

→ | Yellow underside, functions as either a floating canopy or vertical interior wall

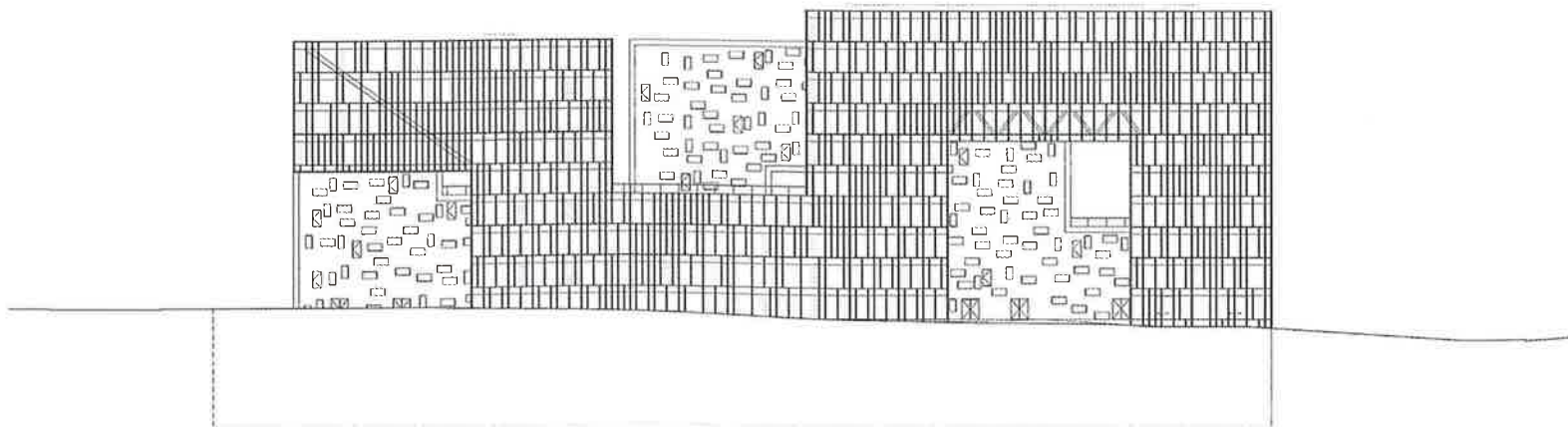
The site of this project is a vital liaison point between the center of Saint-Etienne and the new Châteaureux neighborhood. The idea is to develop a long 'continuum' on the site to interact with adjacent streets, a linear construction that rears up and unfolds but also hugs the ground line to form a low accessible building. The principle behind this continuum is to imagine a set of 'communicating parts' that enable the user-administrations to merge into a whole, and to evolve according to their needs. The absence of breaks in surfaces will ensure that things remain open-ended, with the possibility of extending or reducing space. This dual treatment obeys a simple logic, which aims at expressing clarity in folds. Depending on these movements, the yellow underside is either a floating canopy or an interior vertical wall, accompanying internal pedestrian movements with its rich luminous presence.

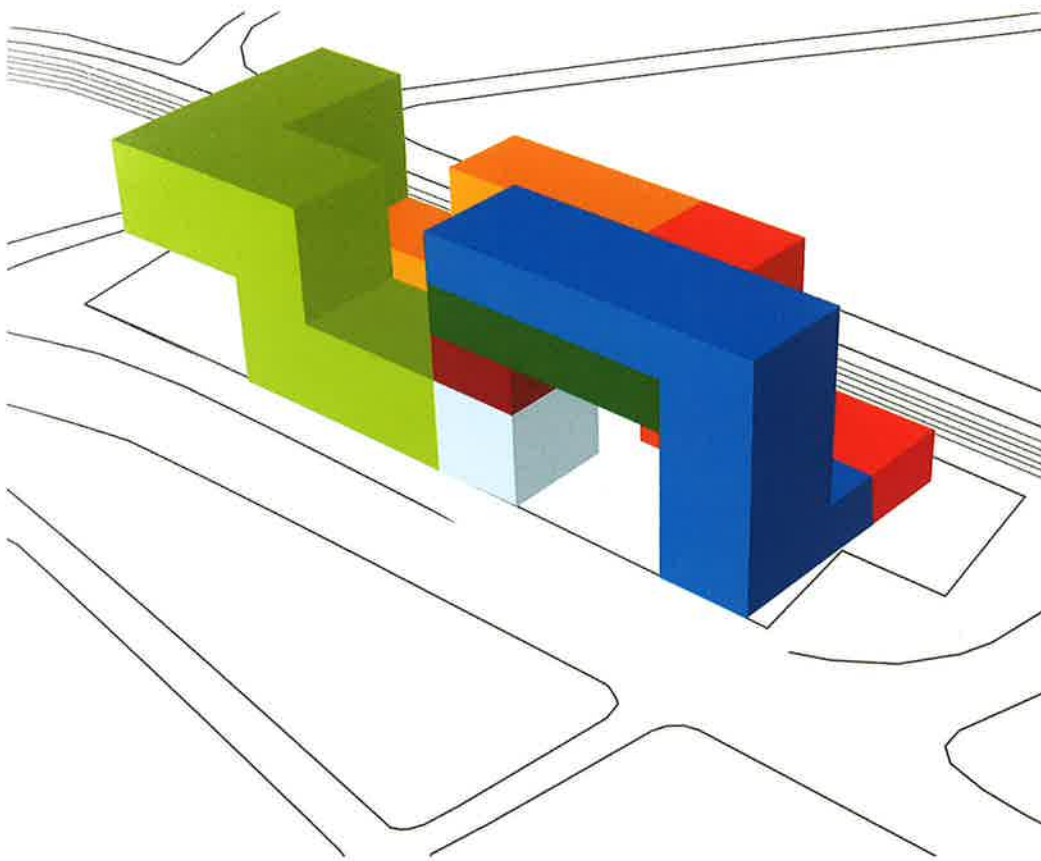
Address: ZAC Châteaueux, Saint-Etienne, France. **Client:** Altarea-Cogedim. **Completion:** 2010. **Gross floor area:** 25,000 m². **Main materials:** concrete, steel, glass, aluminum. **Number of work stations:** 1,500. **Types of offices:** group, open-plan, business club, moveable walls. **Setting:** city center.





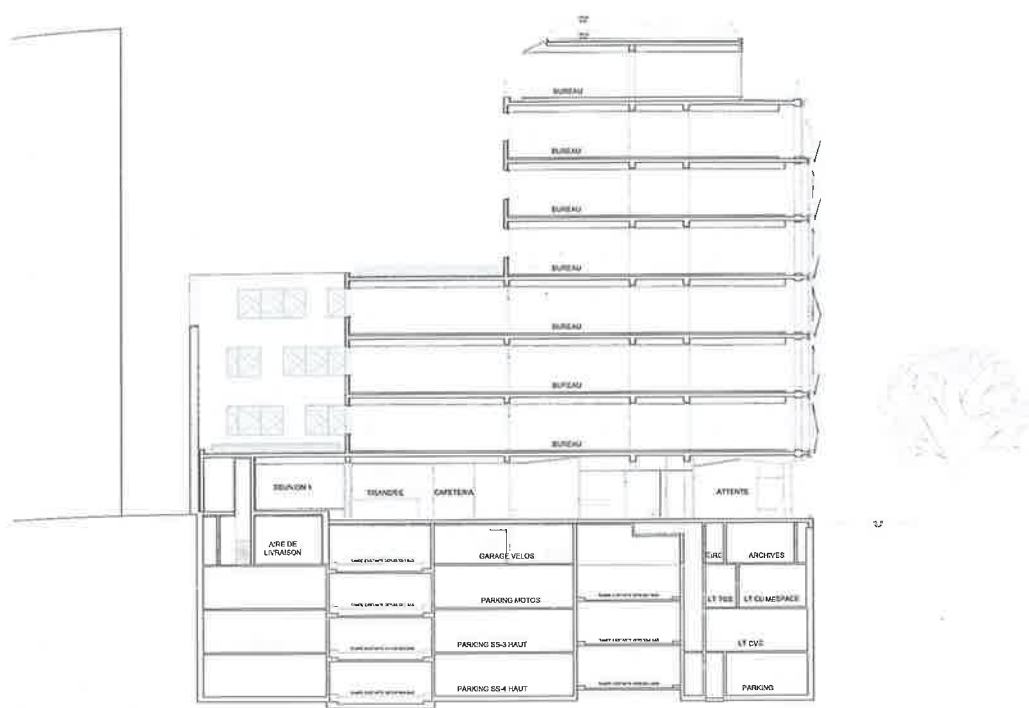
↑ | Design develops a long 'continuum' to
interact with adjacent streets
↓ | Façade design





↖ | Schema program
↓ | Office interior





↖ | Section
↓ | Meeting room

