

Gaite Lyrique Gaite Lyrique剧院

设计公司 Design company: MANUELLE GAUTRAND ARCHITECTURE

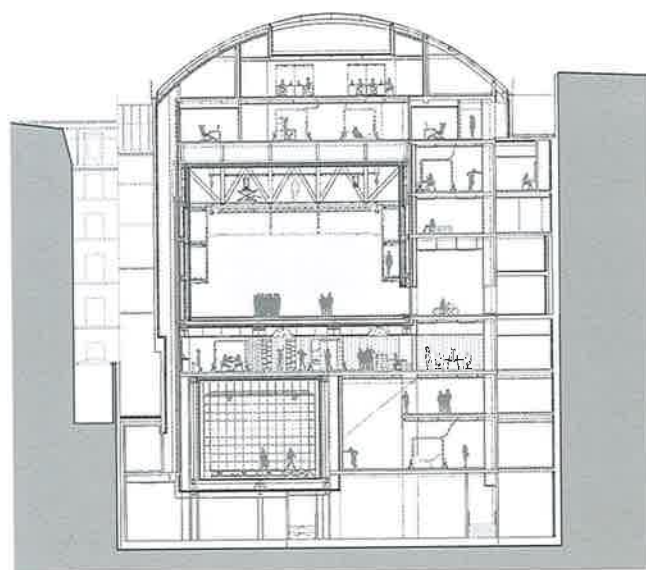
面积 Area: 9,500 m²



Design Concept • 设计理念

Re-structuring an old theatre in the heart of Paris to turn it into an interactive platform for 21st century music and arts poses a number of difficult problems. To sum them up: the Manuelle Gautrand office had to conceive of a place that could cater to all the artistic activities of today, a place open to public visits but that was also a working studio where artists could actually create, produce and present.

在巴黎中心重建一个古老剧院，并让其成为一个21世纪音乐和艺术的互动平台，这带来了一些难题。总结：Manuelle Gautrand公司不得不设想一个地方，能迎合今天所有的艺术活动，对公众开放，也可作为艺术家实际创作、生产和展示艺术的一个工作室。













Feature • 特色

The design priorities are clear: create three main production facilities, three spaces for live shows. Around these three anchor points unfold a continuum of fluid and mobile 'breathing' spaces to serve alternately as work studios and presentation spaces: sets for the digital arts and modern music, for performers and for the public. They include library, exhibition areas, foyers, café, bookshop, rehearsal studios, etc.

设计的重点很明确：为现场表演创建三个主要的演出设施以及三个表演空间。围绕这三个中心点呈现一个流动和可移动的“呼吸”空间连续体，可作为工作室和演示空间交替使用：设有数字艺术和现代音乐区、表演者区和公众服务区。他们包括图书馆、展览区、休息室、咖啡厅、书店、排练室等等。

Materials • 材料

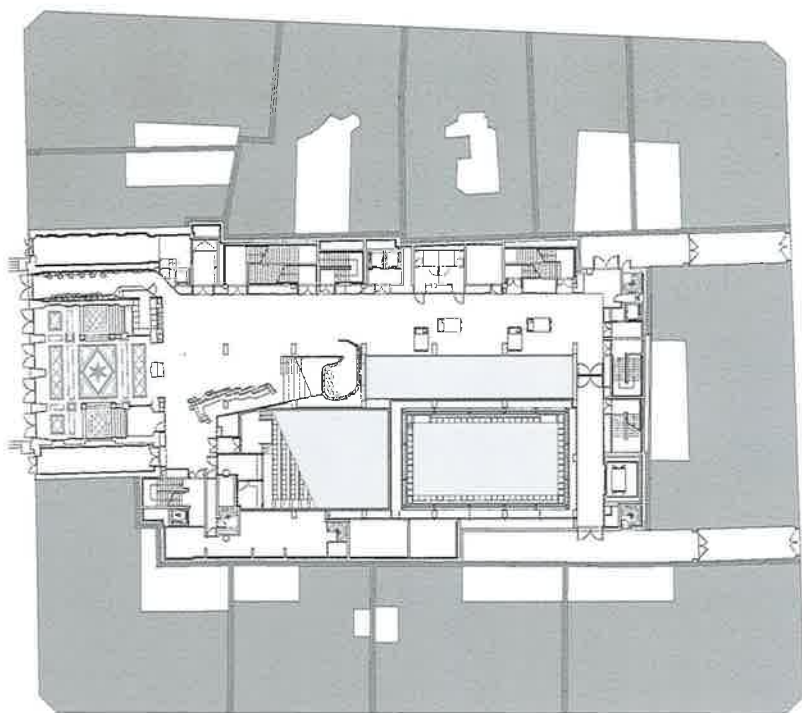
Glass, concrete, wood, aluminum
玻璃、混凝土、木材、铝合金











Description of the Project • 设计说明

In this case, the stage and backstage areas are equipped to the highest international standards. They are flexibly designed so that events of different nature and scale can be performed, whether operas, musicals, ballet or acrobatic performances. The upper circle and dress circle levels offer optimum sightlines for the whole audience. During the day, the striking shape of the cultural building makes it clearly recognisable, while it is conspicuous in the evening because of its colour. The theatre – full of life and activity around the clock – together with the various other cultural bodies of the area contributes to the local space.

该项目舞台和后台区域的装备都达到了最高国际水准。设计灵活以便表演不同性质和规模的项目，无论戏剧、音乐会、芭蕾舞，还是杂技表演。楼厅前座和楼厅后座给全场观众提供了最佳的观赏视线。在白天，这栋文化建筑的突出形状清晰可辨，同时因为其色彩，它在晚上也是引人注目的。剧院一天24小时都充满了生命活力，它与这个区域其他各种各样的文化建筑群一起，共同为当地空间做出了贡献。

