

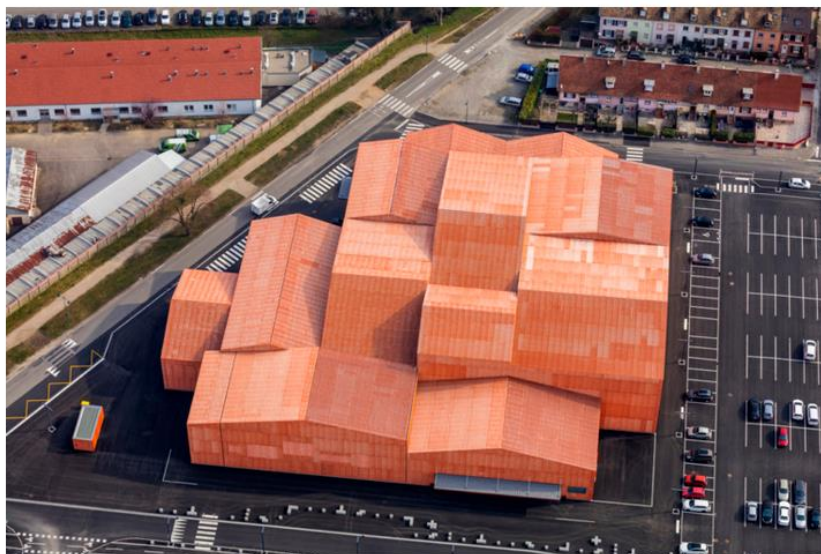
## FLEXIBLE SPACES AND VOLUMES IN THE FORUM BY MANUELLE GAUTRAUND

BLOG, ENG/ESP, RESEARCH



Located in Saint-Louis (Alsace, France) in the Three Borders region and in the inner suburb of Basel, the Forum is a 5,713 sqm cultural facility designed to host associative, sporting and cultural events.

Paris based firm **Manuelle Gautrand** was in charge of the design. The aim of the architects was to harmoniously integrate the Forum and its activities with the surrounding houses, offices, kindergarden and primary school.

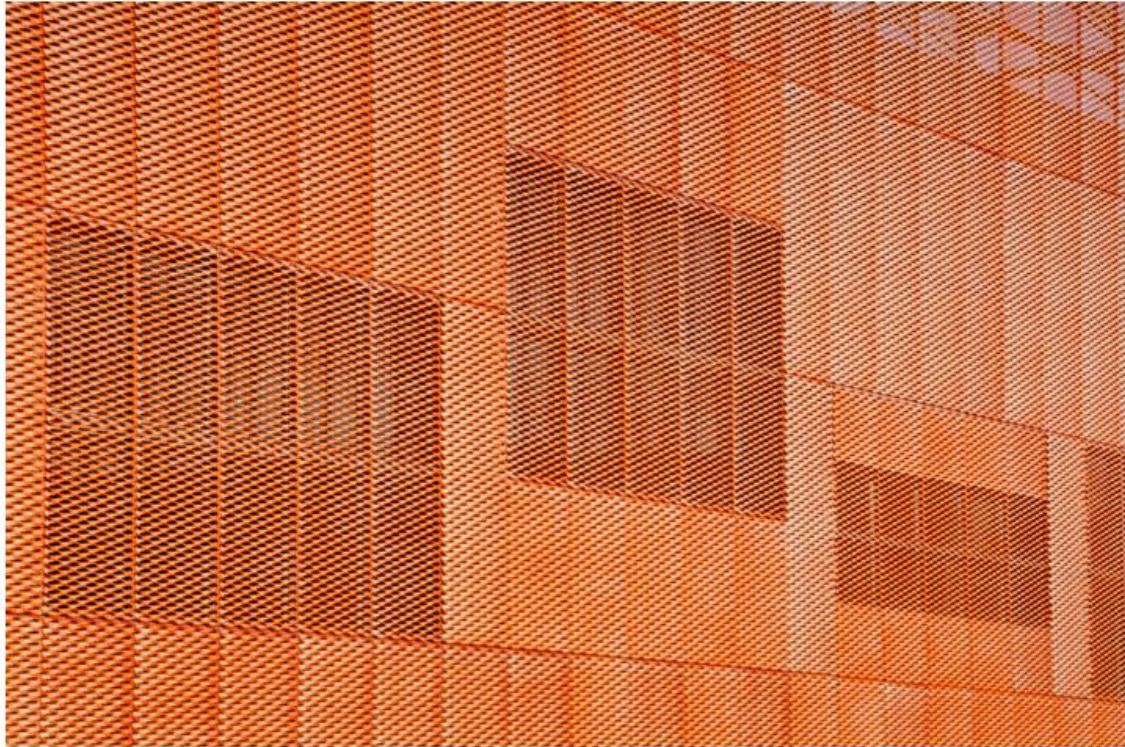


The building consists of 13 volumes of different sizes assembled into one big complex that creates two flexible halls. Called the Great Hall, the largest one is designed for basketball, handball, badminton, judo or gymnastics. It can host sporting events as well as fairs, shows and concerts. The Festival Hall is also suitable for banquets and parties, as it has a kitchen nearby.

The interiors of the Forum have movable partitions that allow to create flexible spaces according to their different use. For instance, the halls can be connected to create one large area.

An orange copper net covers the external facades of the 13 volumes, while a perforated metal mesh connects them.

The Forum won the 2017 the **German Design Award** for **Excellent Communications Design Architecture** for its special design and use of materials.



*From the architect.*

The wish was to create a unified project, playing on both the multiplicity of the connected volumes, and on a global homogenous design. The building, made of 13 distinct volumes assembled in one big puzzle at the center of the site, is a harmonious answer to the surrounding individual houses. In the same time, the choice of a unique material for the whole building – a copper-colored expanded metal – makes it original equipment and a landmark in the city of Saint-Louis. The inspiration has come from the context, which combines big orangey interlocking tile roofs with some industrial brick chimneys reminding the industrial past of the site.



Lien internet : [www.pornarchitecture.com/portfolio/flexible-spaces-volumes-forum-manuelle-gautraud/](http://www.pornarchitecture.com/portfolio/flexible-spaces-volumes-forum-manuelle-gautraud/)

Inside the building, the spaces flexibility is maximal: two main adjustable subspaces have been created. The Great Hall (1.870 sqm), dedicated to host sport practice, competitions, shows, concerts or fairs, can be adapted thanks to a mobile bleacher and a set of retractable sliding partitions. The Festival Hall (870 sqm) also hosts shows and fairs, as well as associative events or banquets and weddings, thanks to a kitchen placed right next to it.



Those two big areas can be independent or opened on each other if the use of the entire building is required.

A dynamic thermal simulation was used to reach a very good energetic efficiency. This level of performance has been achieved thanks to two envelopes with complementary functions: A first structural envelope forming the core and shell while guaranteeing thermal and acoustic insulations. And a second skin of expanded metal mounted over the core and shell, creates a wide plenum allowing great thermal protection.

#### Technical file

**Architects:** Manuelle Gautrand Architecture

**Location:** Place Georges Gissy, 68300 Saint-Louis, France

**Area:** 5713.0 sq.

**Project Year:** 2015

**Photographs:** Courtesy of Manuelle Gautrand

**Manufacturers:** Akzo Nobel, Cabril, Knaut, METAL DEPLOYE, MOSO, PONTIGGIA, URBAN-DUMEZ, VITRA

**Project Manager:** Cécile Ortolio

**Structure engineers:** AIC

**Fluids engineers:** ALTO

**Acoustic:** JP LAMOUREUX

**Management and coordination:** C2Bi (Strasbourg)

**Technical controller:** Qualiconsult (Strasbourg)

**H&S Coordination:** Veritas (Didenheim)

**Client:** City of Saint-Louis