

OFFICE TOWER IN PARIS

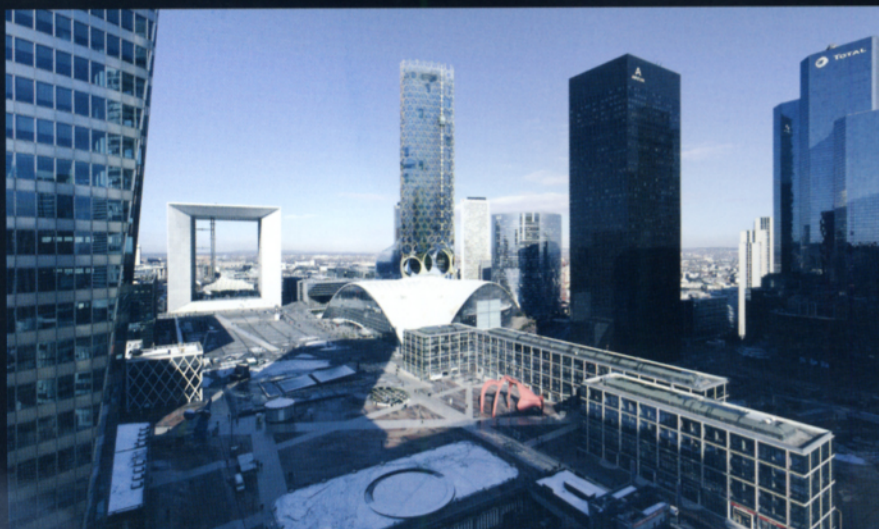
파리의 오피스 타워

ARCHITECT MANUELLE GAUTRAND ARCHITECTURE

This project is about a 300 metre-high new-generation tower at La Defense, on the western rim of Paris. The programme runs to 140,000m² of office space with two restaurants and a rooftop viewing deck for the general public. The concept we are evolving aims at two things. First, express power in a high-rise structure that is a communication device without precedent. Second, introduce poetry by creating a unique building the size of the Eiffel Tower. Structurally, the tower is designed as an externally exposed skeleton that wraps the office floors in a double-layer mesh of woven metal, lacquered two-tone white and beige. Both meshes interlace via large circular openings that draw them together. This structural-skin soars up a thousand feet in graceful formal liberty, set free from the usual constraints that plague towers. In fact, it resolves itself on different scales: the individual scale of the offices, which makes them human while opening superb views over the cityscape; and the overall scale of structural might and outsize dimensions. At the foot of the tower, the interwoven mesh flares out to form large round openings that gives ground-level space spectacular monumental presence on the esplanade. Text by MANUELLE GAUTRAND ARCHITECTURE

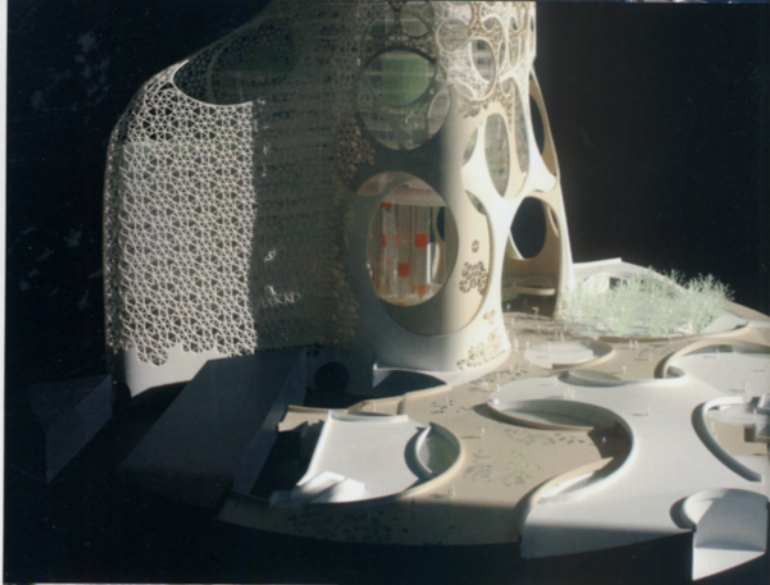
Location La Defense District Paris, France Design period 2006 Building area 140,000m² Project Manager Yves Tougard, Bertrand Colson Consultants Jacobs France, Terrell International, Arcora, Alto Ingenierie, Casso, Edeca, Tohier Editor Lee Kyung-eun Editorial Designer PARK Hyun-ji

이 프로젝트는 파리 서쪽 끝 라 데팡스에 위치한 300m 높이의 차세대 타워에 관한 것이다. 프로그램은 두 개의 레스토랑이 있는 140,000m² 규모의 사무 공간과 공공을 위한 옥상 데크로 구성되어 있다. 우리가 추구하는 컨셉은 두 가지를 목표로 한다. 커뮤니케이션 수단으로서 전례가 없는 고층 구조의 표현력과 에펠탑 규모의 독특한 구조물을 창출함으로써 시적인 분위기를 창출하는데 있다. 구조적으로 타워는 사무 공간을 감싸는 화이트와 베이지 컬러의 락커가 칠해진 골조가 외부에 노출되도록 설계되어 있다. 두 개의 메쉬는 대형 원형 입구를 통해 서로 얹혀 있다. 이 구조적 외피는 우아한 형태로 수천 피트 상공위로 솟아 있다. 실제로 이는 사람들이 도시의 전망을 즐길 수 있는 사무 공간의 인간적인 스케일과 길이를 가능하게 힘든 거대 구조의 스케일을 포함한 여러가지 스케일을 연출한다. 타워 하단부에서 서로 얹힌 메쉬는 산책로에 기념비적 공간을 제공해주는 커다란 원형 입구를 형성하고 있다. 글: 마누엘 가우트란드 아키텍처

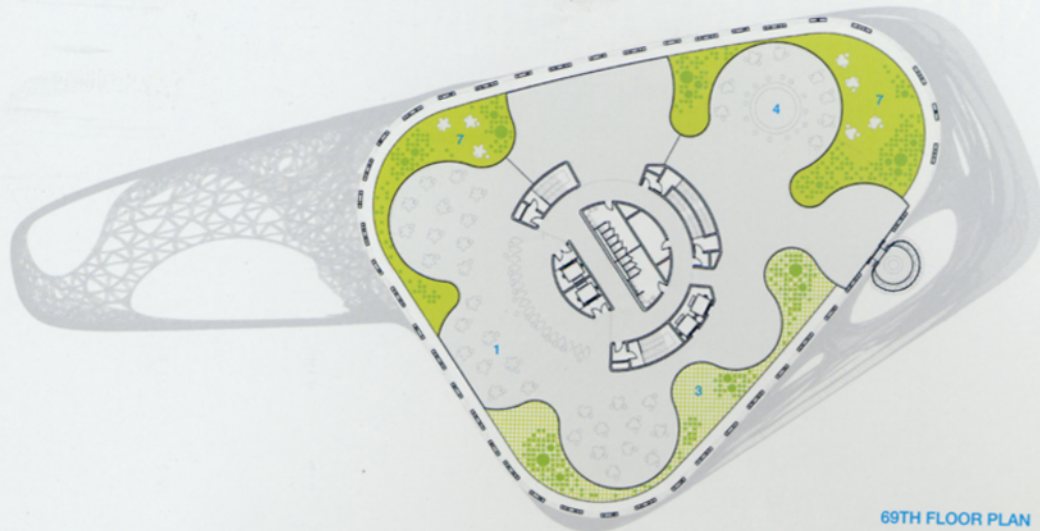


MANUELLE GAUTRAND Born in 1961, Manuelle Gautrand qualified as an architect in 1985. After working on several joint projects, she set up her own practice in 1991. She has taken part in several major presentations and events, including the international consultation in 2001 for the Francois Pinault Foundation of Contemporary Art, and the Venice Biennial in 2002 and 2004. She exhibited her sustainable development design studies at ARCHILAB in Ori'ns, and presented her Paris Docks project at the De Singel gallery in Antwerp, Belgium.

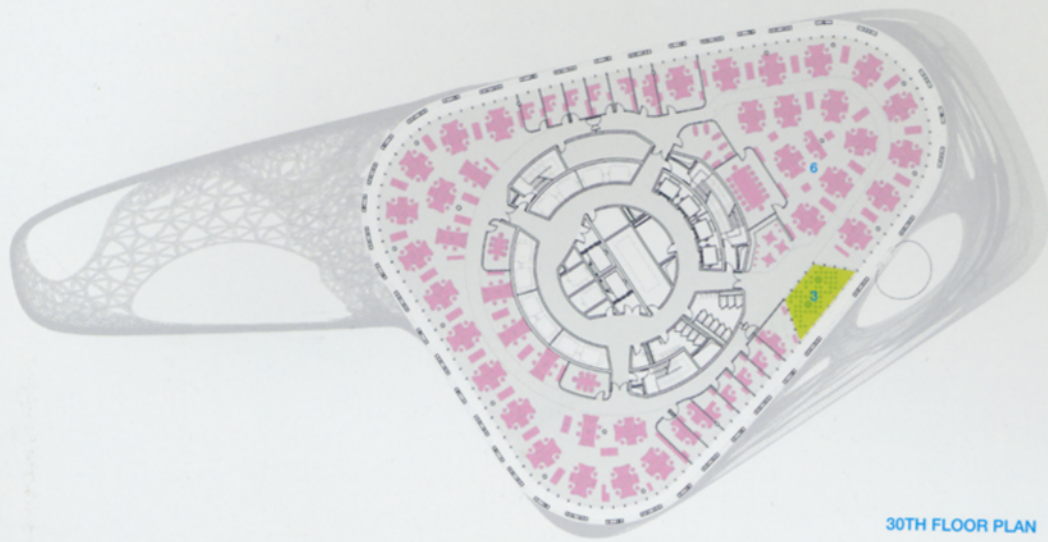




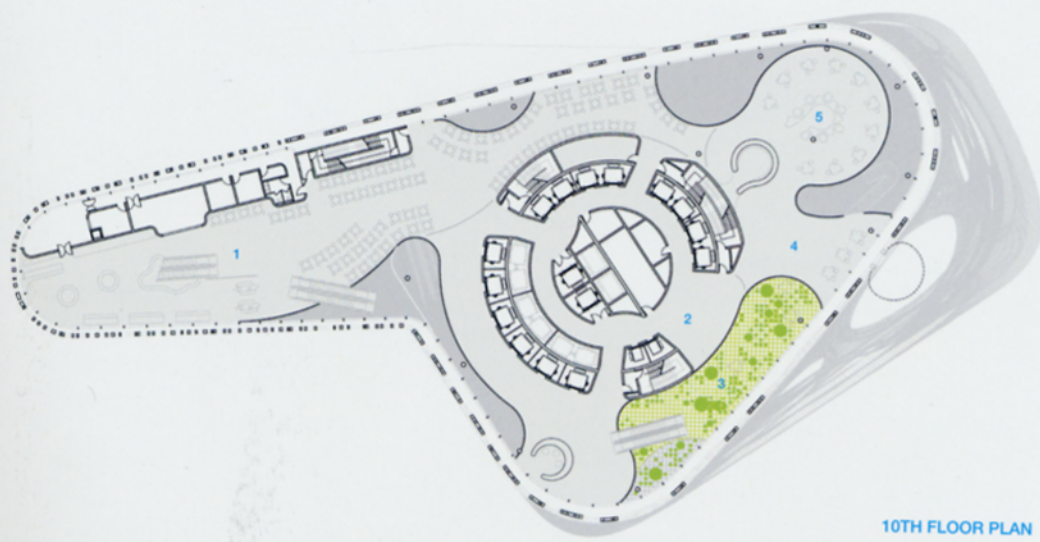
- 1 RESTAURANT
- 2 SKY LOBBY
- 3 GARDEN
- 4 LOUNGE / BAR
- 5 CAFETERIA
- 6 OFFICE
- 7 TERRACE



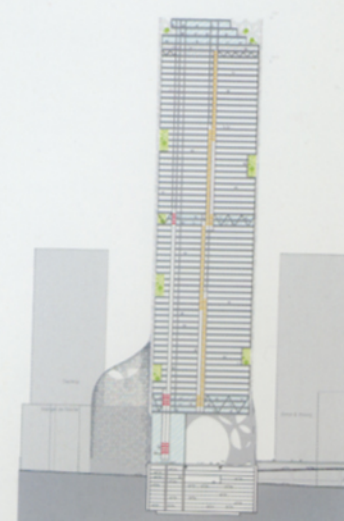
69TH FLOOR PLAN



30TH FLOOR PLAN



10TH FLOOR PLAN



SECTION