


[ABOUT](#)
[ADVERTISE](#)
[SUBMIT WORKS](#)
[ARCHIVES](#)
[IMAGE GALLERY](#)
[SITEMAP](#)



architecture lab online magazine
news - projects - events - competitions - videos - interviews - bookclub

[News](#)
[Projects](#)
[Competitions](#)
[Events](#)
[Videos & Interviews](#)
[Magazines](#)
[Books](#)

[Subscribe to RSS](#)

You are here: [Home](#) > [Projects](#) >

"ORIGAMI", Paris / France by Manuelle Gautrand Architecture

This office building stands on avenue Friedland, in the immediate vicinity of the Arc de Triomphe and Place de l'Etoile, in a luxurious Parisian neighborhood.

[Tweet](#) 7 [Share](#) 3 0

Posted In [projects](#)



photo © Vincent Fillon

Project Details:

Location: 36, Boulevard de Friedland, 75008 [Paris, France](#)

Type: [Offices](#) - [Public](#)

Architects: [Manuelle Gautrand Architecture](#) – [www.manuelle-gautrand.com](#)

Investor: Gecina

Project: Demolition of an existing building (office building of the 1970s) with conservation of a 4-level underground parking lot. Construction of an office building (about 300 work spaces) that hosts the French headquarters of Barclays Capital Bank. The building comprises luxury offices, lobby, relaxation area / cafeteria, six meeting rooms, computer rooms, technical premises, archives, and parking lot (85 car places). The building features two courtyard gardens and the top of the building provides a combination of part garden roof, part wooden deck terrace.

Area: 5.800 sqm

Dates: 2006: design competition, 2007-2008 : studies, 2008-2010 : works, march 2011 : building's completion and delivery

The project was implemented in two parts: the main building on a 20 meter-wide stripe on the avenue, and an extension in the rear, between two courtyard gardens. At the ground floor level, the lobby plays on transparency between the street front and the main garden. The building in the rear of the lot is more private, and it is there that the cafeteria and meeting rooms are laid out, with garden space on both sides.

[J'aime](#)
11548 « J'aime ». [Inscription](#) pour voir ce qu'aiment vos amis.

0

[Follow @architecturelab](#) 5,932 followers

[Subscribe](#)

[RSS Feed](#)
[LinkedIn](#)
[Google Plus](#)

[More subscriptions options here »](#)

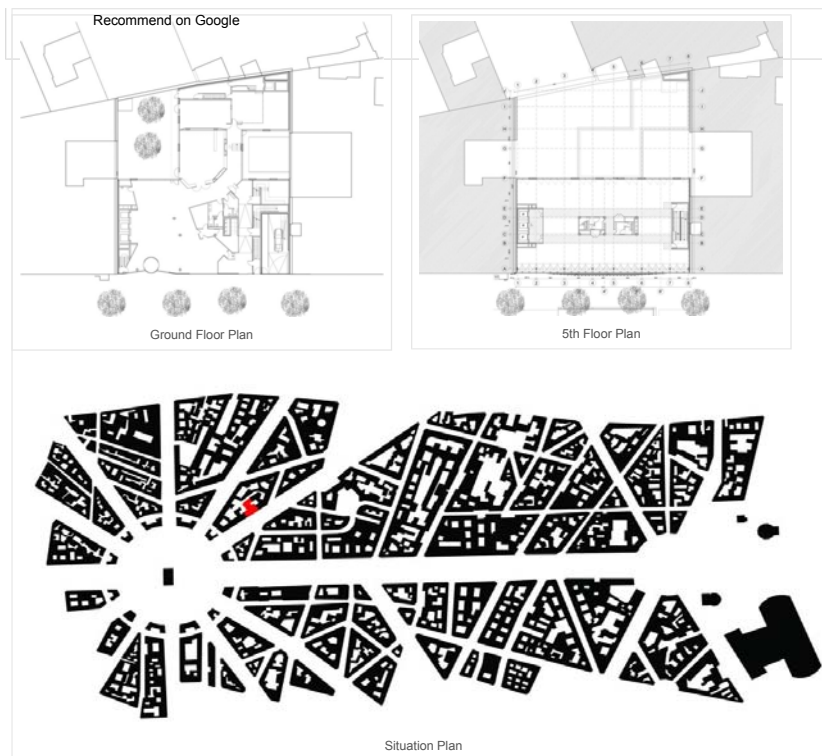


SEARCH ARCHITECTURE LAB

[Search](#)

NEWS

- [A Massive Proposal To Turn A Florida Pier Into A Floating Urban Park](#)
- [Why Every City Should Be Planting Rain Gardens](#)
- [Very cool: Warming-hut designs win big at The Forks](#)
- [Houston's Trafalgar Square?](#)
- [Azerbaijan takes on Burj with plan for world's tallest tower](#)
- [Should architects design buildings as if they were Web apps?](#)
- [The rise of the Megacity](#)
- [How New York's Airports Crashed and Burned](#)
- [ANDREW GELLER, 1924 – 2011](#)
- [The Collaborative Design of Ancient Hive Cities](#)
- [Decline of affordable housing has many causes](#)
- [Why the Most Environmental Building is the Building We've Already Built](#)
- [Cleveland Clinic's new master plan](#)
- [QUESTIONING CATASTROPHE](#)
- [America's Health Threat: Poor Urban Design](#)
- [Visions of a Development Rising From the Sea](#)
- [Let's Raze Javits Center \(but First Finish Renovations\)](#)
- [Landscapes That Fool You](#)
- [NEW EXPRESSION On Housing in the App Store](#)
- [How Can Cities Make Life Easier for the Elderly?](#)



The unusual location of the site led us to design a project that would embrace and take advantage of the view and immerse into the natural light. An emblematic showcase of the building – the main façade is mostly glass, partially covered with a second-skin of screen-printed marble pattern.



photo © Vincent Fillon

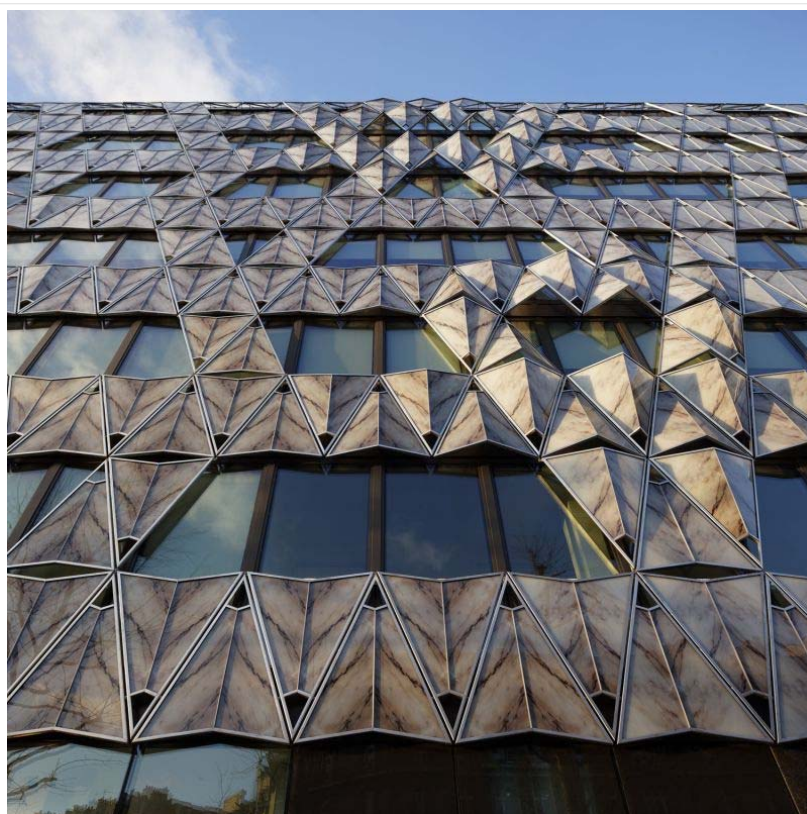
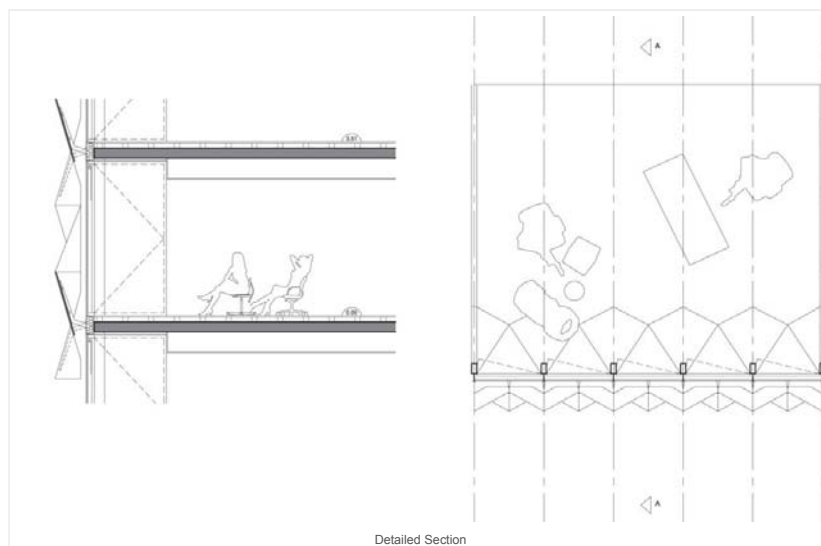


photo © Vincent Fillon

The rendered effect is a tremendous origami and the view of this delicate folded marble can be enjoyed both from exterior and interior of the building.

The panels are composite, a film of marble mounted on a twin layer of glass. The symmetrical panels that are folded and assembled by two form an "open-book" pattern and thus highlight the design of the veins of the marble.

This second skin is translucent and acts as a breast wall to ensure privacy as well as filter daylight, creating a soft interior atmosphere.



Marble folds create a vibration along the 30 meter-long front. At both ends, in continuity with the façades of neighboring buildings, the origami becomes calmer and flattens out. But in the central part it forms a delicate bas-relief.

The project then develops into the depth of the site with the same objective of clarity while adding a strong presence of plants. The offices roofed with large lawns weave around the two courtyard gardens.



photo © Vincent Fillon



photo © Vincent Fillon

The lobby functions as a meeting point of these two atmospheres – the urban and sophisticated of the main façade, and the more private and verdant of the other side of the building. The interior spaces were designed in a contemporary spirit, highlighting the luminous atmosphere with light-colored and soft materials.

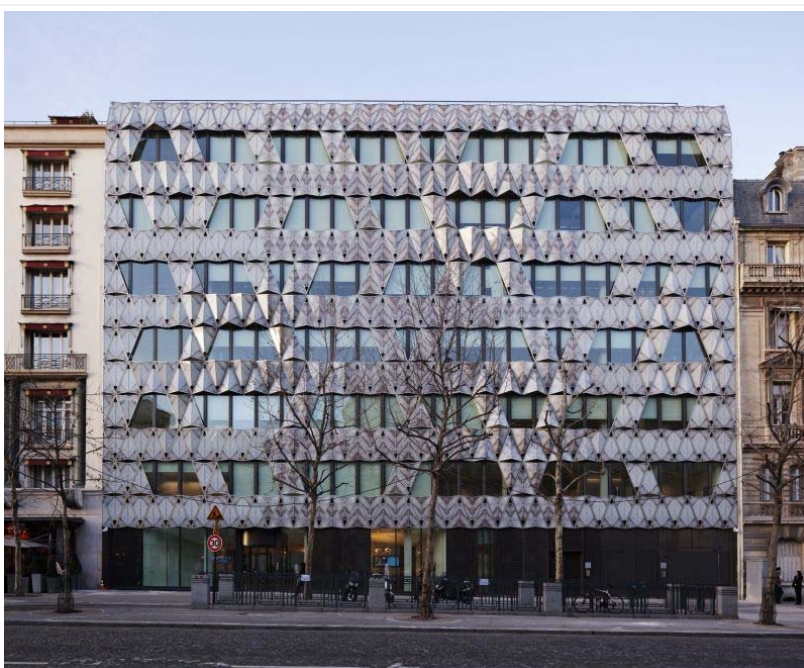


photo © Vincent Fillon



photo © Vincent Fillon

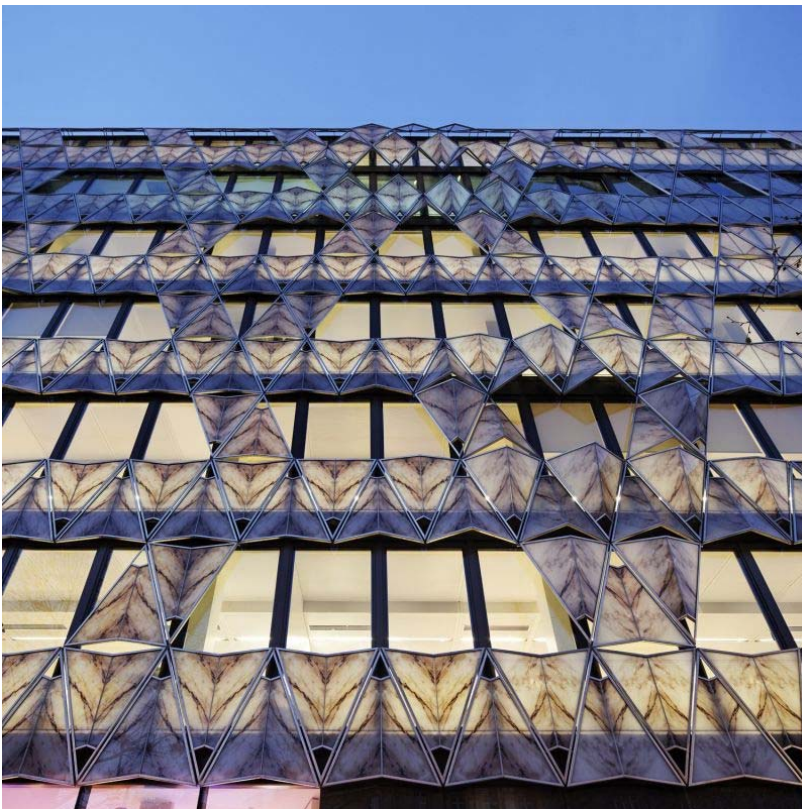


photo © Vincent Fillon



photo © Vincent Fillon



photo © Vincent Fillon

[Building Design Suite](#)

The Ultimate suite of software from Autodesk

autodesk.fr/Building-Design

AdChoices 