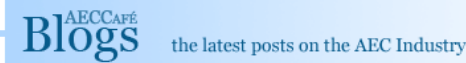




- Home
- News»»
- ArchShowcase»»
- Events»»
- Tutorials
- Jobs
- Catalog»»
- Videos»»
- Downloads»»
- Blogs
- Forums
- Books
- RSS
- Advertise



« Copenhagen Headquarters for accountancy and consultancy firm in Denmark by 3XN Architects
Casa dos Cubos in Tomar, Portugal by EMBAIXADA arquitectura »

ArchShowcase



Sumit Singhal

Sumit Singhal loves modern architecture. He comes from a family of builders who have built more than 20 projects in the last ten years near Delhi in India. He has recently started writing about the architectural projects that catch his imagination.

Origami Office Building in Boulevard de Friedland, France by Manuelle Gautrand Architecture

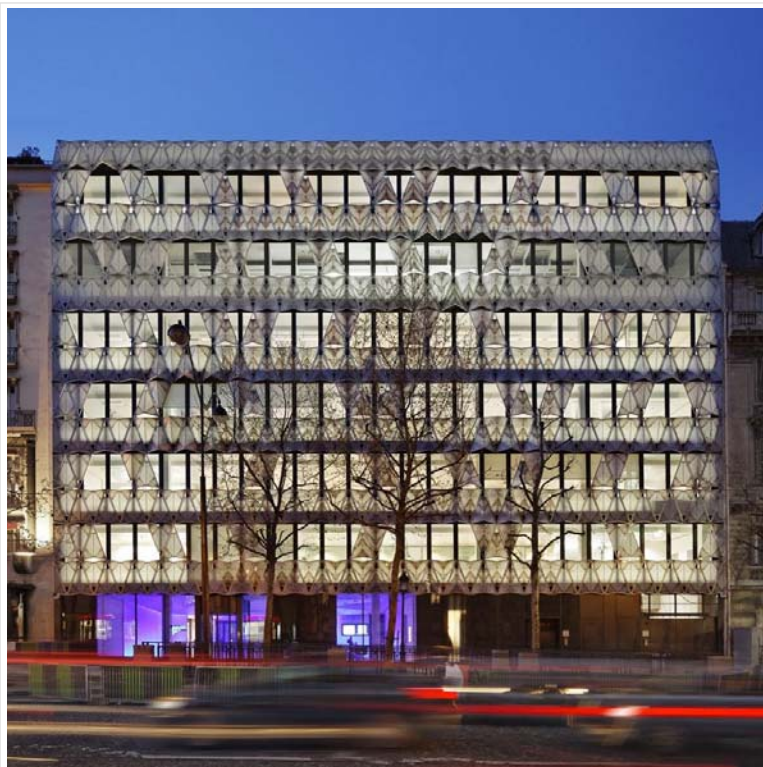
February 5th, 2012 by Sumit Singhal

Article source: [Manuelle Gautrand Architecture](#)

Share Tweet 1

Demolition of an existing building (office building of the 1970s) with conservation of a 4-level underground parking lot.

Construction of an office building (about 300 work spaces) that hosts the French headquarters of Barclays Capital Bank. The building comprises luxury offices, lobby, relaxation area / cafeteria, six meeting rooms, computer rooms, technical premises, archives, and parking lot (85 car places). The building features two courtyard gardens and the top of the building provides a combination of part garden roof, part wooden deck terrace.



Exterior View (Images Courtesy Vincent Fillon)

- **Architect:** [Manuelle Gautrand Architecture](#)
- **Name of Project:** Origami Office Building
- **Location:** Boulevard de Friedland, France
- **Investor:** Gecina
- **Client's Representative:** Kaufman & BroadDevelopment
- **Photo files:** ©Vincent Fillon
- **Other files:** © Manuelle Gautrand

Back to 'AECCafe Blogs' ArchShowcase

Search

Submit Your Project

» [Submit](#)

Subscribe

- » [email](#)
- » [Facebook](#)
- » [Twitter](#)
- » [RSS Feed](#)

Popular Posts This Month

- » Bal House in Menlo Park, California by Terry & Terry... - (1,505 views)
- » Dongdaemun Design Park and Plaza, Seoul, Korea by Zaha Hadid... - (787 views)
- » JNC Sales Office & Community Arts Center in Xiamen,... - (557 views)
- » Hilton Pattaya in Pattaya, Thailand by Department of... - (366 views)
- » The Park Hotel in Hyderabad designed by Skidmore, Owings... - (313 views)
- » Kindergarten 8 Units in Almeria, Spain by Los del Desierto... - (291 views)
- » Highwood Square in Hamden, Connecticut by Ben Ledbetter... - (241 views)
- » HL23 in West Chelsea Arts district, New York by NEIL M.... - (232 views)
- » Gandra School in Paredes, Portugal by Atelier Nuno Lacerda... - (204 views)
- » The East Village in Austin, Texas by Bercy Chen Studio LP - (181 views)

Recent Posts

- » Yoga Deva in Gilbert, Arizona by blank studio architecture
- » THQ – Work At Play in Montréal, Canada by ID+S Design Solutions Inc.
- » Trails – Oostvaarderplein visitor center in The Netherlands by Ooze
- » Cintres-Ligne Tokyo Boutique in Tokyo, Japan by Kotaro Horiuchi Architecture
- » Alma Hotel Residence Winning Proposal in Atacama, Northern Chile by Kouvo & Partanen
- » Cilandak Bisnis Square (CIBIS) in Jakarta, Indonesia by Broadway Malayan
- » Casa la Roca in valle de bravo, mexico by Parque Humano
- » Casa dos Cubos in Tomar, Portugal by EMBAIXADA arquitectura

Recent Comments

- » Lenis on Exhibition stand Invent Design in RAI, Amsterdam by Chris Collaris Design
- » Jon Karel on Moses Bridge in Halsteren, The Netherlands by RO & AD architecten
- » Austin Scott Brooks on SnackBox In Times Square, New York by Aedifica
- » Ben Ledbetter on Highwood Square in Hamden, Connecticut by





Exterior View (Images Courtesy Vincent Fillon)

- **Principal architect:** Manuelle Gautrand
- **Architect project manager:** Yves Tougard
- **Structure:** Khephren
- **Façades:** Arcora
- **Fluids:** Alto
- **Economist:** Georges Ventre
- **Acoustics:** Lamoureux
- **Interior design for Barclays:** DGM Associés
- **Consultancy for green building standards:** Cap Terre
- **HQE (High Environmental Quality) certification:** Certivea
- **Main structure:** Colas
- **Curtain wall façades and exterior joinery:** Schüco
- **Double-skin, screenprinted glass and marble façades:** Simetal
- **Surface:** 5.800sqm
- **Global cost:** Confidential
- **Dates:**
 - **Design competition:** 2006
 - **Studies:** 2007-2008
 - **Works:** 2008-2010
 - **Building's completion and delivery:** March 2011

Ben Ledbetter Architect and
Graftworks Design Research
» Modern Art on Lille Museum of
Modern, Contemporary and
Outside Art in Villeneuve d'Ascq,
France by Manuelle Gautrand
Architecture

Archives

Select Month

Tags

[Amsterdam](#) [Australia](#)

[Austria](#) [Barcelona](#)

[Beijing](#) [Belgium](#) [Brazil](#)

[California](#)

[Canada](#) [Chicago](#)

[China](#) [Colorado](#)

[Denmark](#) [Florida](#)

[France](#)

[Germany](#) [Hungary](#)

[Illinois](#) [India](#) [Israel](#) [Italy](#)

[Japan](#) [London](#) [Los](#)

[Angeles](#) [Madrid](#) [Mexico](#)

[Netherlands](#) [New](#)

[York](#) [Norway](#) [Paris](#)

[Poland](#) [Portugal](#) [Russia](#)

[Slovenia](#) [South Korea](#)

[Spain](#) [Sweden](#)

[Switzerland](#) [Taiwan](#)

[Texas](#) [The](#)

[Netherlands](#)

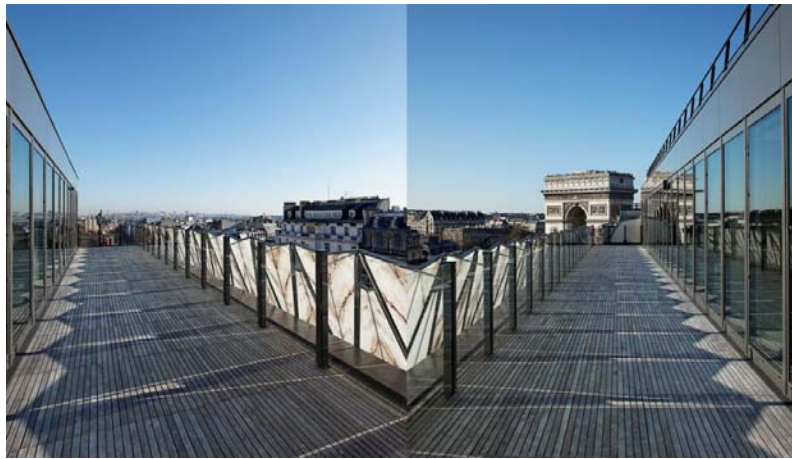
[Tokyo](#) [UK](#) [Vienna](#)

[Washington](#)

Categories

- » [3D Athletics Track](#) (1)
- » [3D Studio VIZ](#) (7)
- » [Airport](#) (11)
- » [Amphitheater](#) (1)
- » [Apartments](#) (63)
- » [Aquarium](#) (3)
- » [Aquatic Centre](#) (1)
- » [Architectural Desktop](#) (12)
- » [Arena](#) (1)
- » [Arkey](#) (2)
- » [Art Gallery](#) (21)
- » [Art Studio](#) (12)
- » [Artificial Rock](#) (1)
- » [Auditorium](#) (2)
- » [Awards](#) (7)
- » [Bakery](#) (2)
- » [Bank](#) (3)
- » [Bar](#) (16)
- » [Bathhouse](#) (1)
- » [Beauty Parlor](#) (1)
- » [Boat Dock](#) (1)
- » [Boat House](#) (1)
- » [Boutique](#) (3)
- » [Bridge](#) (18)
- » [Broadcasting Company](#) (1)
- » [Building](#) (179)
- » [Building Campus](#) (7)
- » [Bus Terminal](#) (4)
- » [Business Centre](#) (7)
- » [Cabin](#) (1)
- » [Cafe](#) (10)
- » [Cafeteria](#) (2)
- » [Camp](#) (5)
- » [Campus](#) (2)
- » [Cancer Center](#) (2)
- » [Care Center](#) (7)
- » [Cave](#) (1)
- » [Chapel](#) (4)
- » [Checkpoint](#) (1)
- » [Church](#) (22)
- » [City](#) (15)
- » [City Center](#) (20)
- » [Civic Center](#) (7)
- » [Clinic](#) (7)

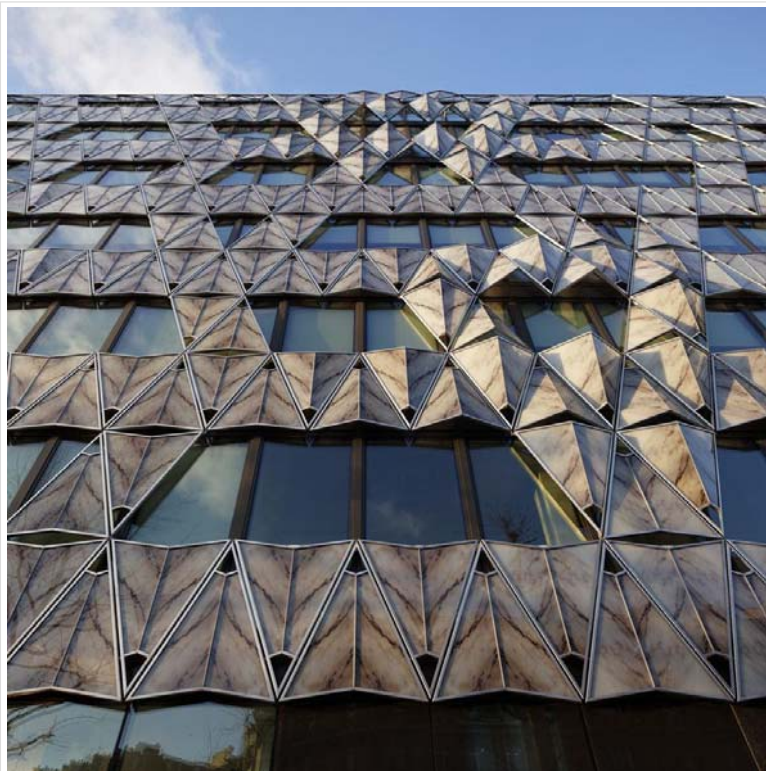




Images Courtesy Vincent Fillon

This office building stands on avenue Friedland, in the immediate vicinity of the Arc de Triomphe and Place de l'Etoile, in a luxurious Parisian neighborhood.

The project was implemented in two parts: the main building on a 20 meter-wide stripe on the avenue, and an extension in the rear, between two courtyard gardens. At the ground floor level, the lobby plays on transparency between the street front and the main garden. The building in the rear of the lot is more private, and it is there that the cafeteria and meeting rooms are laid out, with garden space on both sides.



Exterior View (Images Courtesy Vincent Fillon)

The unusual location of the site led us to design a project that would embrace and take advantage of the view and immerse into the natural light. An emblematic showcase of the building – the main facade is mostly glass, partially covered with a second-skin of screen-printed marble pattern.

The rendered effect is a tremendous origami and the view of this delicate folded marble can be enjoyed both from exterior and interior of the building. The panels are composite, a film of marble mounted on a twin layer of glass. The symmetrical panels that are folded and assembled by two form an "open-book" pattern and thus highlight the design of the veins of the marble.

- » [Club House](#) (8)
- » [Commercial Building](#) (82)
- » [Community Centre](#) (27)
- » [Competitions](#) (13)
- » [Concert hall](#) (11)
- » [Control Centre](#) (4)
- » [Convention Center](#) (1)
- » [Corporate Center](#) (2)
- » [Cottage](#) (4)
- » [Courthouse](#) (2)
- » [Courtyard](#) (2)
- » [Crematorium](#) (1)
- » [Cruise Port](#) (4)
- » [Cruise Terminal & Port Service Center](#) (5)
- » [Cultural Center](#) (52)
- » [Dental office](#) (2)
- » [Detention Center](#) (1)
- » [Diamond Exchange Center](#) (1)
- » [Digital Project](#) (3)
- » [Disaster Prevention Station](#) (2)
- » [EASY Membrane](#) (1)
- » [Eco-Center](#) (3)
- » [Educational and Business Center](#) (17)
- » [Educational Center](#) (59)
- » [Educational Institute](#) (27)
- » [Elementary School](#) (1)
- » [Energy plant](#) (14)
- » [Entance](#) (1)
- » [Entertainment Centre](#) (10)
- » [Exhibition Center](#) (20)
- » [Extention](#) (1)
- » [Factory](#) (12)
- » [Farm House](#) (4)
- » [Featured Architects](#) (79)
 - » [Frank Gehry](#) (4)
 - » [Henning Larsen](#) (31)
 - » [Peter Zumthor](#) (4)
 - » [Zaha Hadid](#) (40)
- » [Fire Station](#) (6)
- » [Foodcourt](#) (2)
- » [Footbridge](#) (5)
- » [Fryrender](#) (1)
- » [Funeral Home](#) (1)
- » [Furniture](#) (1)
- » [Furniture Mall](#) (4)
 - » [Artifical Furniture](#) (2)
- » [Gallery](#) (25)
- » [Garage](#) (1)
- » [Garden](#) (23)
- » [Golf Club](#) (4)
- » [Golf Course](#) (1)
- » [Government Building](#) (14)
- » [Grasshopper](#) (28)
- » [Guest House](#) (3)
- » [Gymnastics Centre](#) (2)
- » [Hairstyling Center](#) (3)
- » [Harbour](#) (3)
- » [Headquarters](#) (30)
- » [Health Research centre](#) (2)
- » [Historic Site](#) (5)
- » [Horse Riding facility](#) (2)
- » [Hospital](#) (11)
- » [Hospitality](#) (3)
- » [Hostel](#) (3)
- » [Hot House](#) (1)
- » [Hotel](#) (61)
- » [House](#) (573)
- » [Houseboat](#) (1)
- » [Housing Development](#) (64)
- » [Hut](#) (5)
- » [Industrial](#) (5)
- » [Information Tower](#) (4)
- » [Infrastructure](#) (3)
- » [Interiors](#) (7)
- » [Kerkythea](#) (1)
- » [Kindergarten](#) (19)
- » [Kitchen](#) (1)
- » [Laboratory and Office](#) (7)
- » [Lake](#) (1)
- » [Land Preserve](#) (2)
- » [Landscape](#) (2)
- » [Library](#) (29)
- » [Light Rail](#) (1)
- » [Lightroom](#) (2)
- » [Lightwave](#) (4)
- » [Locker Room](#) (1)
- » [Lounge](#) (3)
- » [Mall](#) (2)
- » [Master Plan](#) (19)
- » [Media Centre](#) (4)
- » [Medical Center](#) (20)
- » [Medical production unit](#) (1)
- » [Meditation center](#) (1)
- » [Memorial](#) (7)
- » [Metro Station](#) (3)
- » [Mixed use](#) (88)



Exterior View (Images Courtesy Vincent Fillon)

This second skin is translucent and acts as a breast wall to ensure privacy as well as filter daylight, creating a soft interior atmosphere. Marble folds create a vibration along the 30 meter-long front. At both ends, in continuity with the façades of neighboring buildings, the origami becomes calmer and flattens out. But in the central part it forms a delicate bas-relief.

The project then develops into the depth of the site with the same objective of clarity while adding a strong presence of plants. The offices roofed with large lawns weave around the two courtyard gardens.

The lobby functions as a meeting point of these two atmospheres – the urban and sophisticated of the main facade, and the more private and verdant of the other side of the building. The interior spaces were designed in a contemporary spirit, highlighting the luminous atmosphere with light-colored and soft materials.

- » [Mobile Cottage](#) (1)
- » [Mosque](#) (1)
- » [Museum](#) (107)
- » [Music Centre](#) (8)
- » [Music College](#) (1)
- » [National Monument](#) (4)
- » [Newforma](#) (1)
- » [Nursing Home](#) (1)
- » [Offices](#) (124)
- » [Opera House](#) (17)
- » [Park](#) (19)
- » [Parking Structure](#) (6)
- » [Party Venue](#) (3)
- » [Pavilion](#) (54)
- » [Performing Arts Center](#) (14)
- » [Petrol Station](#) (1)
- » [Pharmaceutical Plant](#) (1)
- » [Planetarium](#) (1)
- » [Plant](#) (5)
- » [Playground](#) (2)
- » [Pool House](#) (3)
- » [Port's public spaces](#) (11)
- » [Power Plant](#) (5)
- » [Pre-School Campus](#) (1)
- » [Prison](#) (1)
- » [Public Art](#) (11)
- » [Public Landscapes](#) (54)
- » [Railway Station](#) (6)
- » [Recreational facility](#) (2)
- » [Rehabilitation Centre](#) (5)
- » [Research Station](#) (21)
- » [Residential](#) (270)
- » [Resort](#) (12)
- » [Resource Center](#) (2)
- » [Rest Stop](#) (1)
- » [Restaurant](#) (48)
- » [Restoration](#) (7)
- » [Retail](#) (4)
- » [Retail facilities](#) (10)
- » [Retirement Home](#) (4)
- » [Retreat](#) (2)
- » [Room](#) (3)
- » [S/W](#) (746)
 - » [Adobe](#) (157)
 - » [Adobe CS](#) (15)
 - » [Illustrator](#) (40)
 - » [InDesign](#) (19)
 - » [Photoshop](#) (128)
 - » [AlphaCAM](#) (1)
 - » [Arc+](#) (1)
 - » [Artlantis](#) (15)
 - » [Autodesk](#) (497)
 - » [3ds Max](#) (151)
 - » [Autocad](#) (377)
 - » [Autodesk Inventor](#) (1)
 - » [Ecotect](#) (6)
 - » [Maya](#) (32)
 - » [Navisworks](#) (7)
 - » [Revit](#) (54)
 - » [AutoDesSys](#) (19)
 - » [FormZ](#) (19)
 - » [Bentley](#) (26)
 - » [Generative Components](#) (4)
 - » [Microstation](#) (21)
 - » [ProjectWise](#) (1)
 - » [Cadpipe](#) (1)
 - » [CYPE](#) (5)
 - » [Dassault Systèmes](#) (1)
 - » [Catia](#) (1)
 - » [Google](#) (122)
 - » [SketchUp](#) (122)
 - » [Graphisoft](#) (52)
 - » [ArchiCAD](#) (52)
 - » [JWWCAD](#) (2)
 - » [MAXON](#) (20)
 - » [Cinema 4D](#) (20)
 - » [Maxwell](#) (13)
 - » [McNeel](#) (155)
 - » [Rhino](#) (155)
 - » [Mental Ray](#) (1)
 - » [Nemetschek](#) (116)
 - » [AllPlan](#) (7)
 - » [Vectorworks](#) (109)
 - » [Podium](#) (1)
 - » [T-Splines](#) (3)
 - » [TEKLA](#) (1)
 - » [TopSolid](#) (1)
 - » [ZWCAD](#) (1)
- » [Safety Center](#) (1)
- » [Salon](#) (4)
- » [Sanctuary](#) (1)
- » [School](#) (73)
- » [Science Club](#) (2)
- » [Science Park](#) (4)
- » [Sculpture](#) (1)
- » [Selected Works](#) (2)
- » [Senior center](#) (3)



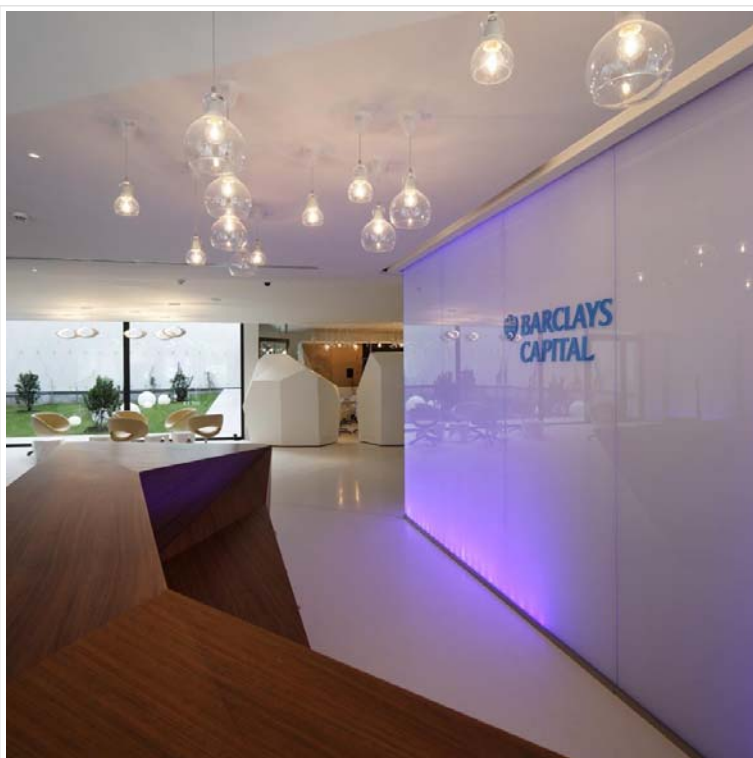
Exterior View (Images Courtesy Vincent Fillon)

- » [Service Station](#) (3)
- » [Shelter](#) (6)
- » [Shelter Home](#) (1)
- » [Shop](#) (24)
- » [Shopping Mall](#) (1)
- » [Showroom](#) (41)
- » [Skate Park](#) (1)
- » [Ski Jump Tower](#) (1)
- » [Skyscrapers](#) (4)
- » [Social Centre](#) (4)
- » [Social welfare](#) (2)
- » [Solar Panel Factory](#) (2)
- » [Spa Centre](#) (4)
- » [Spaceport](#) (2)
- » [Sports Complex](#) (26)
- » [Sports Hall](#) (13)
- » [Stadium](#) (20)
- » [Station](#) (4)
- » [Stock Exchange](#) (2)
- » [Stores](#) (14)
- » [Student Center](#) (4)
- » [Studio](#) (23)
- » [Sustainable Design](#) (42)
- » [Swimming Pool](#) (11)
- » [Technological Park](#) (2)
- » [Temple](#) (2)
- » [Terrace](#) (1)
- » [Theater](#) (29)
- » [Toilet](#) (1)
- » [Tower](#) (89)
- » [Tower Skin](#) (1)
- » [Town Hall](#) (1)
- » [Track](#) (1)
- » [Trade Fair Centre](#) (1)
- » [Train Station](#) (2)
- » [Training centre](#) (1)
- » [Transport & Infrastructure](#) (3)
- » [Tsunami Disaster Prevention Station](#) (1)
- » [Tunnel](#) (1)
- » [Uncategorized](#) (113)
- » [University Building](#) (39)
- » [Urban Design](#) (38)
- » [V-Ray](#) (42)
- » [Villa](#) (26)
- » [Village](#) (2)
- » [Visitor Center](#) (3)
- » [Warehouse](#) (8)
- » [Waste Treatment Facility](#) (1)
- » [Water Park](#) (3)
- » [Water tank](#) (2)
- » [Water treatment Plant](#) (1)
- » [Wellness Center](#) (1)
- » [Wildlife Center](#) (2)
- » [Windmill](#) (1)
- » [Winery](#) (8)
- » [Youth Centre](#) (1)
- » [Zoological Park](#) (5)

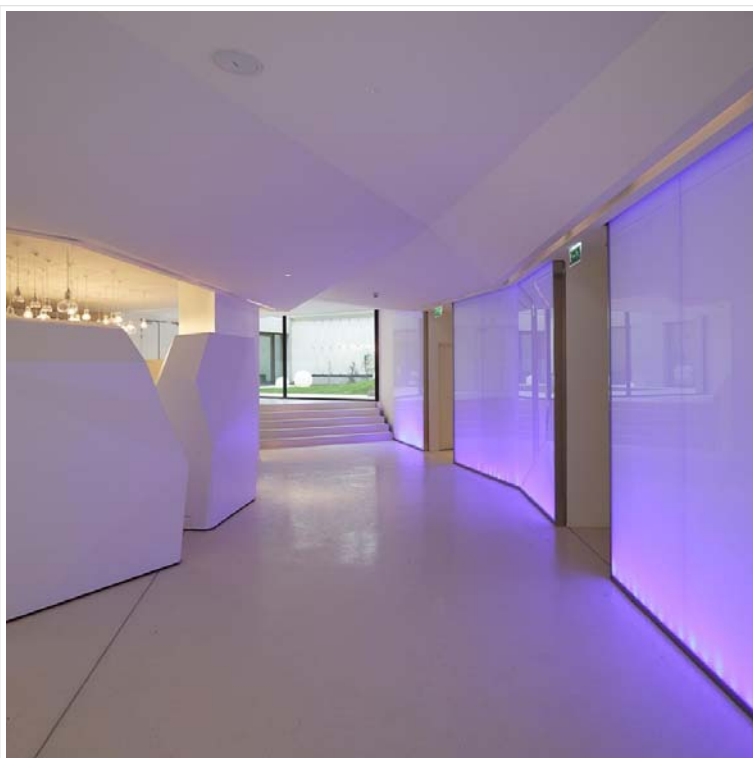
Meta

- » [Log in](#)
- » [Entries RSS](#)
- » [Comments RSS](#)

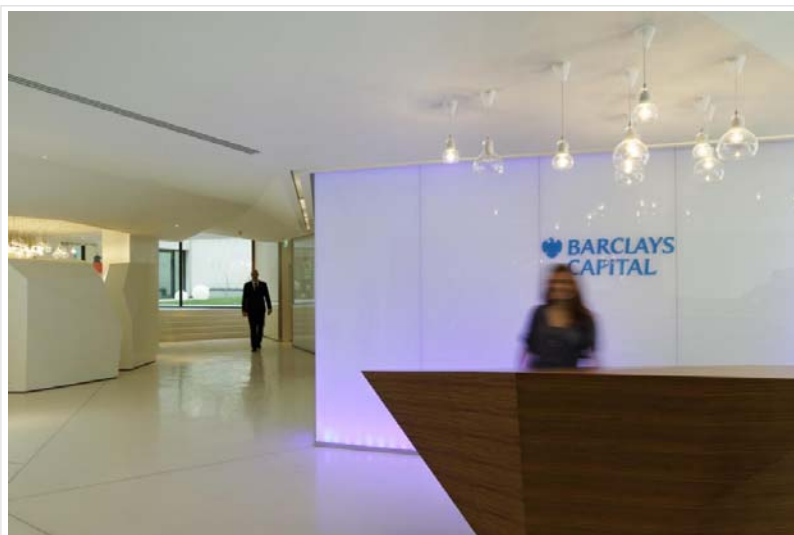
»



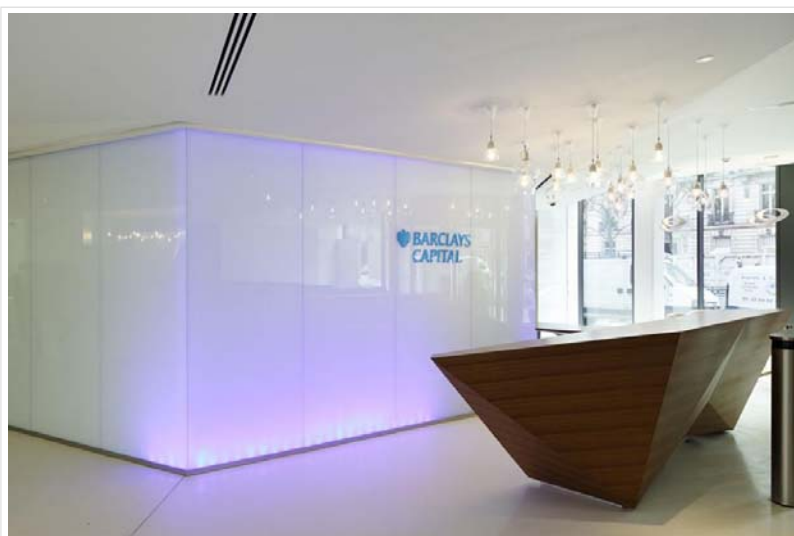
Interior View (Images Courtesy Vincent Fillon)



Interior View (Images Courtesy Vincent Fillon)



Interior View (Images Courtesy Vincent Fillon)



Interior View (Images Courtesy Vincent Fillon)



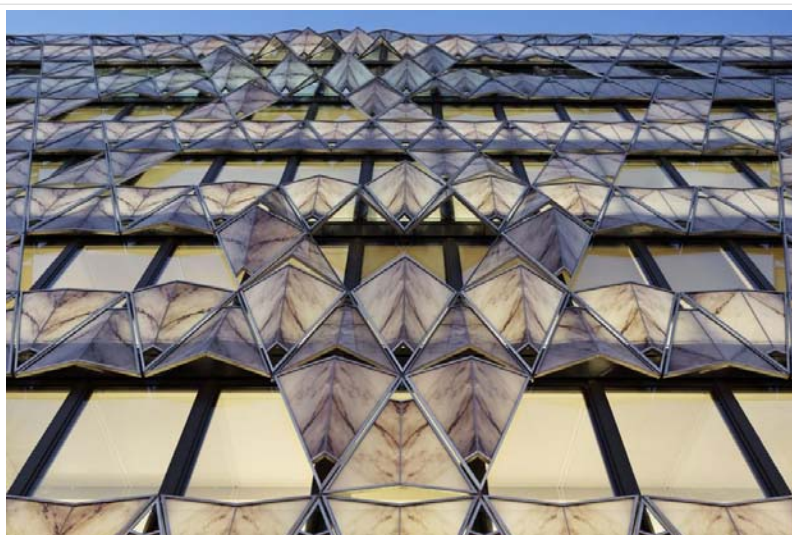
Images Courtesy Vincent Fillon



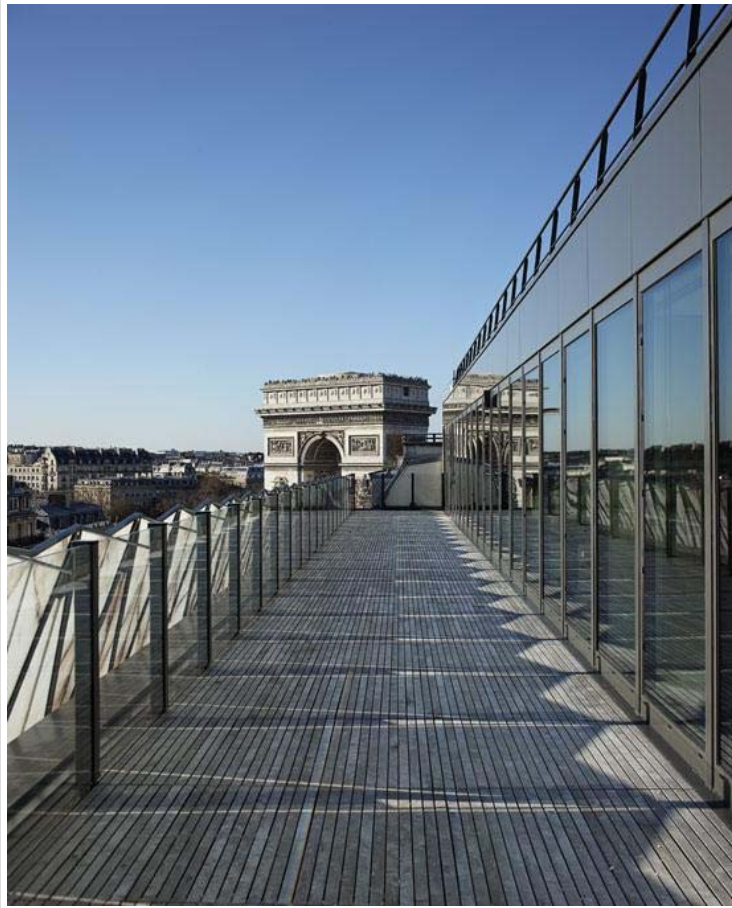
Images Courtesy Vincent Fillon



Images Courtesy Vincent Fillon



Exterior View (Images Courtesy Vincent Fillon)



Images Courtesy Vincent Fillon



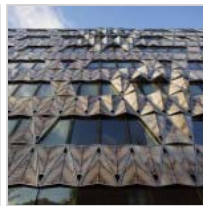
Exterior View (Images Courtesy Vincent Fillon)



Exterior View (Images Courtesy Vincent Fillon)



Images Courtesy Vincent Fillon



Exterior View (Images Courtesy Vincent Fillon)



Exterior View (Images Courtesy Vincent Fillon)



Exterior View (Images Courtesy Vincent Fillon)



Interior View (Images Courtesy Vincent Fillon)



Interior View (Images Courtesy Vincent Fillon)



Interior View (Images Courtesy Vincent Fillon)



Interior View (Images Courtesy Vincent Fillon)



Images Courtesy Vincent Fillon



Images Courtesy Vincent Fillon

Related posts:



Bird Eye View (Images Courtesy Vincent Fillon)



Images Courtesy Vincent Fillon



Images Courtesy Vincent Fillon



Exterior View (Images Courtesy Vincent Fillon)



Side View (Images Courtesy Vincent Fillon)



Exterior View (Images Courtesy Vincent Fillon)



Images Courtesy Vincent Fillon



Images Courtesy Vincent Fillon



Images Courtesy Vincent Fillon



Images Courtesy Vincent Fillon



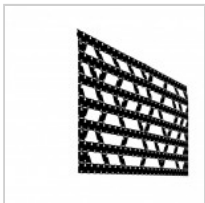
Images Courtesy Manuelle Gautrand



Images Courtesy Manuelle Gautrand



Images Courtesy Manuelle Gautrand



Images Courtesy Manuelle Gautrand



Images Courtesy Manuelle Gautrand



Images Courtesy Manuelle Gautrand



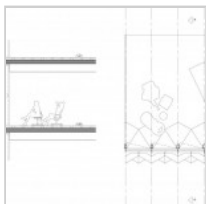
Images Courtesy Manuelle Gautrand



Plan



Section



Facade

Le Petite Prince Nursery School in SAINT-NOM-LA-BRETECHE , France by AR + TE ARCHITECTS

Contact [Manuelle Gautrand Architecture](#)

Tags: [Boulevard de Friedland, France](#)