



Earn up to **4 FREE CE Credits**  
in One Afternoon!

Register Today!

THE BLUE BOOK NETWORK Building & Construction

- [Home](#)
- [News»](#)
- [ArchShowcase»](#)
- [Events»](#)
- [Tutorials](#)
- [Jobs](#)
- [Catalog»](#)
- [Videos»](#)
- [Downloads»](#)
- [Blogs](#)
- [Forums](#)
- [Books](#)
- [RSS](#)
- [Advertise»](#)

AECcAfé

the latest posts on the AEC Industry

« [An Orifice Taking a Breath of Fresh Air in by Simone de Gale Architects](#)  
B+L HQ in Warsaw, Poland by 137kilo Architekci »

ArchShowcase



**Sumit Singhal**

Sumit Singhal loves modern architecture. He comes from a family of builders who have built more than 20 projects in the last ten years near Delhi in India. He has recently started writing about the architectural projects that catch his imagination.

## LaM - Lille Museum of Modern, Contemporary and Outsider Art in Villeneuve d'Ascq, France by Manuelle Gautrand Architecture

April 2nd, 2013 by Sumit Singhal

Like

0

Tweet

1

Share

0

Article source: [Manuelle Gautrand Architecture](#)

The project concerns the refurbishment and the extension of the Lille Modern Art Museum in a magnificent park at Villeneuve d'Ascq. The existing building, designed by Roland Simounet in 1983, is already on the Historic monuments list. The project aims at building up the museum as a continuous and fluid entity, this by adding new galleries dedicated to a collection of Art Brut works, from a travelling movement that extrapolates existing spaces. A complete refurbishment of the existing building was next required, some parts were very worn.



Image Courtesy © Max Lerouge - LMCU

- **Architects:** [Manuelle Gautrand Architecture](#) + Yves Tougard
- **Project:** LaM - Lille Museum of Modern, Contemporary and Outsider Art
- **Location:** Allée du Musée, Villeneuve d'Ascq, France
- **Photography:** Max Lerouge - LMCU, Philippe Ruault & Vincent Fillon
- **Client:** Lille Métropole Communauté Urbaine
- **Firms Involved at Architect'S Side:**  
Museography : Renaud Pierard,  
Structures : Khephen

Back to 'AECcAfe Blogs'  
ArchShowcase

Submit Your Project

» [Submit](#)

Subscribe to AECcAfe

- » [Email](#)
- » [Facebook](#)
- » [Twitter](#)
- » [RSS Feed](#)

Subscribe to this Blog

Join 82 other subscribers

Archives

Posts by date

April 2013						
M	T	W	T	F	S	S
	1	2	3	4	5	6
	7	8	9	10	11	12
	13	14	15	16	17	18
	19	20	21	22	23	24
	25	26	27	28	29	30
< Mar						

Popular Posts This Month

- » [Madura House at Kiribathgoda in Sri Lanka by Damith...](#) - (1,196 views)
- » [Dongdaemun Design Park and Plaza, Seoul, Korea by Zaha Hadid...](#) - (447 views)
- » [MariSol Malibu Beach House in California by Berkus Design...](#) - (420 views)
- » [Groupe Scolaire Pasteur in Limeil-Brevannes, France by R2K...](#) - (395 views)
- » [Casa in Puglia, Italy by Peter Pichler](#) - (389 views)
- » [University Library Utrecht \(UBU\) in the Netherlands by Wiel...](#) - (395 views)
- » [JNC Sales Office & Community Arts Center in Xiamen,...](#) - (273 views)
- » [Hotel Lone in Rovinj, Istria, Croatia by 3LHD designed using...](#) - (197 views)
- » [Dee and Charles Wyly Theater in Dallas, Texas by REX/OMA](#) - (195 views)

**sg 2013**  
constructing for uncertainty  
London, UK  
April 15-20  
[Register Now](#)

Sponsored by  
**Bentley**

Career Opportunity

Key Account Sales Representative

**NEMETSCHek**

Vectorworks

Columbia, MD

CADalog.com

Countless CAD add-ons, plug-ins and more.

[Learn More](#)

Fluids : Alto,  
Economist : LTA (studies phase) , Guesquière-Dierickx (works phase)  
Multimedia : Roger Labeyrie  
Fire security : Casso

- **Other Firms:**  
Refurbishing works of the existing building's façade and roofing: Etienne Sintive,  
Landscape : AWP  
Roofing / Finishings:: Tommasini
- **Figures:**  
Surface : 11.600 sqm, including the extension : 3.200 sqm - exhibition surface: 4.000 sqm  
Global cost : around 30 millions euros inclusive of tax  
Dates : 2002 : design contest, 2003-2005 : studies, 2006-2009 : works, 09/2010 : museum opening



Image Courtesy © Max Lerouge – LMCU

In spite of the heritage monument status of Simounet's construction, rather than set up at a distance, we immediately opted to seek contact by which the extension would embrace the existing buildings in a supporting movement. I tried to take my cue from Roland Simounet's architecture, 'to learn to understand', so as to be able to develop a project that does not mark aloofness, an attitude that might have been seen as indifference.



Image Courtesy © Max Lerouge – LMCU

The architecture of the extension wraps around the north and east sides of the existing arrangement in a fan-splay of long, fluid and organic volumes. On one side, the fan ribs stretch in close folds to shelter a café-restaurant that opens to the central patio; on the other, the ribs are more widely spaced to form the five galleries for the Art brut collection.

» House H in Tokyo, Japan by Sou Fujimoto Architects - (164 views)

## Popular Posts (All Time)

- » Dongdaemun Design Park and Plaza, Seoul, Korea by Zaha Hadid Architects - (13,969 views)
- » Madura House at Kiribathgoda in Sri Lanka by Damith Premathilake designed using SketchUp - (10,778 views)
- » JNC Sales Office & Community Arts Center in Xiamen, China by Line and Space, LLC - (9,615 views)
- » The Park Hotel in Hyderabad designed by Skidmore, Owings & Merrill opens - (5,620 views)
- » MariSol Malibu Beach House in California by Berkus Design Studio - (4,424 views)
- » Herma Parking Building in Gyeonggi-Do, Korea by JOHO Architecture - (3,578 views)
- » London Aquatic Centre in London, UK by Zaha Hadid Architects - (3,527 views)
- » Steckelhörn 11 in Hamburg, Germany by J. Mayer H. Architects - (3,456 views)

## Recent Posts

- » Companhia das Culturas in S. Bartolomeu, Portugal by Ressano Garcia Arquitectos
- » Barn Studio in Orient, New York by studio a/b architects
- » Fitzroy North House in Victoria, Australia by Nic Owen Architects
- » Interior Renovation of Restaurant - Porto II in Portugal by Miguel Nery Arquitectura
- » B+L HQ in Warsaw, Poland by 137kilo Architektci
- » LaM - Lille Museum of Modern, Contemporary and Outsider Art in Villeneuve d'Ascq, France by Manuelle Gautrand Architecture
- » An Orifice Taking a Breath of Fresh Air in by Simone de Gale Architects
- » Unravelling Geometry in London by Simone de Gale Architects

## Recent Comments

- » Paul McAnery Architects on Faceted House 2 in London, United Kingdom by Paul McAnery Architects Ltd
- » Chris Marciano on Samrode Building in Ventspils, Latvia by Kristis Karklins Design and Arhitektūras Birojs FORMA
- » @bunkerarq on Upcycling Pavilion in Mexico City by BNKR Arquitectura
- » @Esteban\_\_Suarez on Upcycling Pavilion in Mexico City by BNKR Arquitectura
- » @AGi\_architects on Kuwait Children's Hospital in Kuwait City by AGi architects

## Archives

Select Month

## Tags

Amsterdam Argentina  
Australia Austria  
Barcelona Beijing Belgium  
Brazil California  
Canada China  
Denmark Florida  
France Georgia  
Germany India Israel  
Italy Japan  
London Los Angeles  
Madrid Mexico Mexico City





Image Courtesy © Philippe Ruault

The Art brut galleries maintain a strong link with the surrounding scenery, but they are also purpose-designed to suit the works that they house: atypical pieces, powerful works that you can't just glance at in passing. The folds in these galleries make the space less rigid and more organic, so that visitors discover art works in a gradual movement. The architecture is partly introverted, to protect art works that are often fragile and that demand toned down half-light.



Image Courtesy © Max Lerouge - LMCU

At the extremity of the folds – meaning the galleries – a large bay opens magnificent views onto the surrounding parkland, adding breathing space to the visit itinerary. These views make up for the half-light in the galleries: the openwork screens in front of the bays mediate with strong light and parkland scenery, a feature that recalls Simounet's generous arrangements in the galleries that he designed. Envelopes are sober: smooth untreated concrete, with mouldings and openwork screens to protect the bays from too much daylight. The surface concrete has a slight colour tint that varies according to intensity of light.

Netherlands New York Norway Paris

Poland Portugal Sao Paulo Slovenia South Korea

Spain Sweden Switzerland Taiwan

Texas The Netherlands

Tokyo UK USA Vienna Washington

#### Categories

- » 3D Athletics Track (3)
- » 3D Studio VIZ (7)
- » 3D Waterfalls (1)
- » Airport (18)
- » Amphitheater (1)
- » Animal Shelter (1)
- » Apartments (173)
- » Aquarium (3)
- » Aquatic Centre (1)
- » Architectural Desktop (23)
- » Arena (2)
- » Arkey (3)
- » Art Center (9)
- » Art Gallery (38)
- » Art Studio (32)
- » Artificial Rock (1)
- » Atrium (1)
- » Auditorium (11)
- » Automobile (3)
- » Awards (11)
- » Bakery (2)
- » Bank (8)
- » Bar (42)
- » Barn (1)
- » Bathhouse (5)
- » Beach House (2)
- » Beauty Parlor (2)
- » Boat Dock (1)
- » Boat House (4)
- » Boiler House (1)
- » Boutique (10)
- » Box (2)
- » Bridge (37)
- » Broadcasting Company (2)
- » Building (409)
- » Building Campus (26)
- » Bus Terminal (5)
- » Business Centre (15)
- » Cabana (1)
- » Cabin (4)
- » Cafe (24)
- » Cafeteria (9)
- » Camp (7)
- » Campus (17)
- » Cancer Center (4)
- » Care Center (18)
- » carve (1)
- » Casino (1)
- » Castle (1)
- » Cave (1)
- » Cemetery (3)
- » Central hall (1)
- » Chamber (1)
- » Chapel (10)
- » Checkpoint (1)
- » Chess Academy (1)
- » Child Care (10)
- » Church (43)
- » City (20)
- » City Center (49)
- » Civic Center (13)
- » Clinic (15)
- » Club House (23)
- » Coffee machine (1)
- » College (3)
- » Commercial Building (118)
- » Community Centre (51)
- » Competitions (18)



Image Courtesy © Max Lerouge – LMCU



Image Courtesy © Vincent Fillon

- » [complex](#) (6)
- » [Concert hall](#) (17)
- » [Conference Center](#) (11)
- » [Control Centre](#) (4)
- » [Convention Center](#) (3)
- » [Corporate Center](#) (8)
- » [Corridor](#) (1)
- » [Cottage](#) (14)
- » [Courthouse](#) (6)
- » [Courtyard](#) (5)
- » [Crematorium](#) (2)
- » [Cruise Port](#) (4)
- » [Cruise Terminal & Port Service Center](#) (7)
- » [Cultural Center](#) (101)
- » [Dance Center](#) (1)
- » [Dental office](#) (9)
- » [Detention Center](#) (1)
- » [Diamond Exchange Center](#) (1)
- » [Digital Project](#) (3)
- » [Disaster Prevention Station](#) (6)
- » [Display](#) (2)
- » [EASY Membrane](#) (1)
- » [Eco-Center](#) (9)
- » [Educational and Business Center](#) (18)
- » [Educational Center](#) (95)
- » [Educational Institute](#) (40)
- » [Electricity Center](#) (1)
- » [Elementary School](#) (4)
- » [Embassy](#) (3)
- » [Energy plant](#) (19)
- » [Entance](#) (1)
- » [Entertainment Centre](#) (12)
- » [Equipement](#) (1)
- » [Exhibition Center](#) (55)
- » [Experience Centre](#) (1)
- » [Extention](#) (2)
- » [Facade](#) (2)
- » [Factory](#) (21)
- » [Farm House](#) (15)
- » [Fashion House](#) (1)
- » [Featured Architects](#) (99)
  - » [Frank Gehry](#) (4)
  - » [Henning Larsen](#) (31)
  - » [Peter Zumthor](#) (4)
  - » [Zaha Hadid](#) (60)
- » [Festival Of Landscape](#) (1)
- » [Filmtheater](#) (1)
- » [Financial Center](#) (1)
- » [Fire Station](#) (11)
- » [Fitness center](#) (4)
- » [Flats](#) (1)
- » [Foodcourt](#) (4)
- » [Footbridge](#) (9)
- » [Forest](#) (1)
- » [Fryrender](#) (1)
- » [Funeral Home](#) (2)
- » [Furniture](#) (8)
- » [Furniture Mall](#) (5)
  - » [Artifical Furniture](#) (2)
- » [Gallery](#) (37)
- » [Garage](#) (5)
- » [Garden](#) (50)
- » [Gas Station](#) (1)
- » [Geometry Concept](#) (1)
- » [Golf Club](#) (4)
- » [Golf Course](#) (1)
- » [Government Building](#) (19)
- » [Grasshopper](#) (41)
- » [Guest House](#) (9)
- » [gym](#) (1)
- » [Gymnastics Centre](#) (8)
- » [Hairstyling Center](#) (4)
- » [Hall](#) (2)
- » [Harbour](#) (3)
- » [Headquarters](#) (78)
- » [Health Center](#) (1)
- » [Health Research centre](#) (9)
- » [Historic Site](#) (6)
- » [Horse Riding facility](#) (2)
- » [Hospital](#) (45)
- » [Hospitality](#) (8)
- » [Hostel](#) (7)
- » [Hot House](#) (1)
- » [Hotel](#) (134)
- » [House](#) (1280)
  - » [Bathroom](#) (2)





Image Courtesy © Max Lerouge – LMCU



Image Courtesy © Max Lerouge – LMCU

- » [House for disabled](#) (4)
- » [Houseboat](#) (1)
- » [Housing Development](#) (119)
- » [Hut](#) (6)
- » [Hydroelectric](#) (1)
- » [Industrial](#) (10)
- » [Information Tower](#) (5)
- » [Infrastructure](#) (13)
- » [Installation](#) (2)
- » [Institute](#) (2)
- » [Interiors](#) (33)
- » [Kerkythea](#) (1)
- » [Kindergarten](#) (34)
- » [Kitchen](#) (8)
- » [Laboratory and Office](#) (17)
- » [Lake](#) (1)
- » [Land Preserve](#) (4)
- » [Landscape](#) (33)
- » [Landscapes](#) (2)
- » [Learning Studio](#) (1)
- » [Library](#) (68)
- » [Light](#) (1)
- » [Light Rail](#) (1)
- » [LightHouse](#) (7)
- » [Lightroom](#) (2)
- » [Lightwave](#) (5)
- » [Lobby](#) (1)
- » [Locker Room](#) (1)
- » [Lodge](#) (2)
- » [Logistics Centre](#) (2)
- » [Lounge](#) (9)
- » [Mall](#) (5)
- » [Mansion](#) (1)
- » [Market](#) (8)
- » [Master Plan](#) (31)
- » [Media Centre](#) (8)
- » [Medical Center](#) (30)
- » [Medical production unit](#) (1)
- » [Meditation center](#) (2)
- » [Memorial](#) (12)
- » [Metro Station](#) (3)
- » [Mine](#) (1)
- » [Mining town](#) (1)
- » [Mixed use](#) (159)
- » [Mobile Cottage](#) (1)
- » [Mobile House](#) (1)
- » [Model](#) (1)
- » [module](#) (2)
- » [Monument](#) (1)
- » [Mosque](#) (2)
- » [Multipurpose Hall](#) (3)
- » [Museum](#) (194)
- » [Music Centre](#) (23)
- » [Music College](#) (3)
- » [Music Hall](#) (7)
- » [National Monument](#) (5)
- » [Newforma](#) (1)
- » [Nursing Home](#) (4)
- » [office Complex](#) (17)
- » [Office space](#) (8)
- » [Offices](#) (249)
- » [Oil Stations](#) (1)
- » [Oosterheem care centre](#) (1)
- » [Opera House](#) (17)
- » [Optical](#) (2)
- » [Outdoor](#) (1)
- » [Park](#) (50)
- » [Parking Structure](#) (15)
- » [Party Venue](#) (3)
- » [Pavilion](#) (98)
- » [Performing Arts Center](#) (17)
- » [Petrol Station](#) (2)
- » [Pharmaceutical Plant](#) (1)
- » [Pharmacy](#) (2)
- » [Pilgrim Centre](#) (1)
- » [Planetarium](#) (1)
- » [Plant](#) (6)
- » [Platform](#) (2)
- » [Playground](#) (6)
- » [Plaza](#) (5)
- » [Police Station](#) (6)
- » [Pool House](#) (9)
- » [Port's public spaces](#) (21)
- » [Power Plant](#) (7)
- » [Pre-School Campus](#) (2)
- » [Prison](#) (3)
- » [Production Hall](#) (2)



Image Courtesy © Max Lerouge – LMCU

- » [Public Art](#) (15)
- » [Public Housing](#) (1)
- » [Public Landscapes](#) (78)
- » [Public Restroom](#) (1)
- » [Railway Station](#) (11)
- » [Recreational facility](#) (12)
- » [Rehabilitation Centre](#) (7)
- » [Rental house](#) (1)
- » [Research & Development Centre](#) (15)
- » [Research Station](#) (29)
- » [Residential](#) (601)
- » [Resort](#) (24)
- » [Resource Center](#) (2)
- » [Rest Stop](#) (1)
- » [Restaurant](#) (110)
- » [Restoration](#) (9)
- » [Retail](#) (15)
- » [Retail facilities](#) (17)
- » [Retirement Home](#) (8)
- » [Retreat](#) (3)
- » [riding arena](#) (1)
- » [Road](#) (2)
- » [Room](#) (7)
- » [S/W](#) (1474)
  - » [Adobe](#) (312)
    - » [Adobe CS](#) (37)
    - » [Illustrator](#) (86)
    - » [InDesign](#) (31)
    - » [LightRoom](#) (1)
    - » [Photoshop](#) (249)
  - » [AlphaCAM](#) (1)
  - » [Arc+](#) (1)
  - » [Artlantis](#) (30)
  - » [Autodesk](#) (1014)
    - » [3ds Max](#) (309)
    - » [Architectural Desktop](#) (1)
    - » [Autocad](#) (802)
    - » [Autodesk Inventor](#) (2)
    - » [Ecotect](#) (10)
    - » [Maya](#) (54)
    - » [Navisworks](#) (7)
    - » [Revit](#) (114)
  - » [AutoDesSys](#) (29)
    - » [FormZ](#) (29)
  - » [Bentley](#) (46)
    - » [Generative Components](#) (5)
    - » [Microstation](#) (40)
    - » [ProjectWise](#) (1)
  - » [BricsCAD](#) (1)
  - » [Cadpipe](#) (1)
  - » [CYPE](#) (12)
  - » [Dassault Systèmes](#) (2)
    - » [Catia](#) (2)
  - » [Engineered Software](#) (4)
    - » [PowerCADD](#) (4)
  - » [Google](#) (222)
    - » [SketchUp](#) (222)
  - » [Graphisoft](#) (143)
    - » [ArchiCAD](#) (143)
  - » [JWWCAD](#) (2)
  - » [MAXON](#) (36)
    - » [Cinema 4D](#) (36)
  - » [Maxwell](#) (23)
  - » [McNeel](#) (285)
    - » [Rhino](#) (285)
  - » [Mental Ray](#) (12)
  - » [Nemetschek](#) (202)
    - » [AllPlan](#) (11)
    - » [Vectorworks](#) (190)
  - » [Podium](#) (3)
  - » [T-Splines](#) (4)
  - » [TEKLA](#) (2)
  - » [TopSolid](#) (1)
  - » [ZWCAD](#) (4)
- » [Safety Center](#) (1)
- » [Sailing Center](#) (1)
- » [Salon](#) (9)
- » [Sanctuary](#) (1)
- » [Sauna](#) (1)
- » [School](#) (152)
- » [Science Club](#) (4)
- » [Science Park](#) (7)
- » [Sculpture](#) (3)
- » [Selected Works](#) (2)
- » [Senior center](#) (5)
- » [Service Station](#) (9)
- » [Services Centre](#) (2)





Image Courtesy © Max Lerouge - LMCU



Image Courtesy © Max Lerouge - LMCU

- » [Sewing Atelier](#) (1)
- » [Shelter](#) (13)
- » [Shelter Home](#) (2)
- » [Shop](#) (56)
- » [Shopping Mall](#) (17)
- » [Showroom](#) (66)
- » [Skate Park](#) (1)
- » [Ski Jump Tower](#) (1)
- » [Skylight](#) (1)
- » [Skyscrapers](#) (9)
- » [Society](#) (3)
- » [Social Centre](#) (17)
- » [Social welfare](#) (2)
- » [Solar Panel Factory](#) (4)
- » [Solar-Sail](#) (1)
- » [Spa Centre](#) (9)
- » [space](#) (1)
- » [Spaceport](#) (2)
- » [Sports Centre](#) (3)
- » [Sports Complex](#) (51)
- » [Sports Hall](#) (24)
- » [Stadium](#) (36)
- » [Staircase](#) (4)
- » [Station](#) (10)
- » [Stock Exchange](#) (3)
- » [Stores](#) (36)
- » [Street](#) (1)
- » [Streetscape](#) (1)
- » [Student Center](#) (6)
- » [Studio](#) (52)
- » [Super Market](#) (1)
- » [Sustainable Design](#) (43)
- » [Swimming Pool](#) (20)
- » [Table](#) (2)
- » [Technological Park](#) (7)
- » [Technology](#) (1)
- » [Temple](#) (4)
- » [Temporary Housing](#) (1)
- » [Terminal](#) (1)
- » [Terrace](#) (5)
- » [Theater](#) (46)
- » [Toilet](#) (4)
- » [Tower](#) (144)
- » [Tower Skin](#) (2)
- » [Town centre](#) (1)
- » [Town Hall](#) (4)
- » [Track](#) (4)
- » [Trade Fair Centre](#) (3)
- » [Traffic Circle](#) (1)
- » [Train Station](#) (5)
- » [Training centre](#) (6)
- » [Transmitting](#) (1)
- » [Transport & Infrastructure](#) (9)
- » [Tsunami Disaster Prevention Station](#) (1)
- » [Tunnel](#) (2)
- » [Uncategorized](#) (157)
- » [University Building](#) (74)
- » [Urban Design](#) (75)
- » [V-Ray](#) (86)
- » [Villa](#) (72)
- » [Village](#) (3)
- » [Visitor Center](#) (8)
- » [Warehouse](#) (17)
- » [Waste Treatment Facility](#) (1)
- » [Water Park](#) (5)
- » [Water tank](#) (2)
- » [Water treatment Plant](#) (4)
- » [Wedding Chapel](#) (1)
- » [Wedding dress](#) (1)
- » [Wellness Center](#) (2)
- » [Wildlife Center](#) (3)
- » [Windmill](#) (2)
- » [Wine Shops](#) (2)
- » [Winery](#) (17)
- » [Workshop](#) (6)
- » [Youth Centre](#) (3)
- » [Zoological Park](#) (7)

## Meta

- » [Log in](#)
- » [Entries RSS](#)
- » [Comments RSS](#)



Image Courtesy © Vincent Fillon



Image Courtesy © Max Lerouge - LMCU





Image Courtesy © Max Lerouge – LMCU



Image Courtesy © Max Lerouge - LMCU

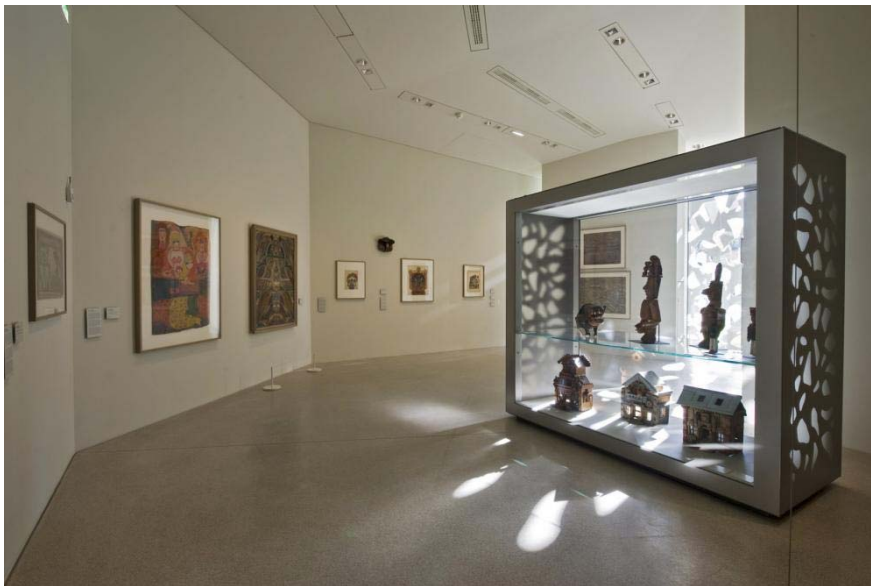


Image Courtesy © Max Lerouge - LMCU



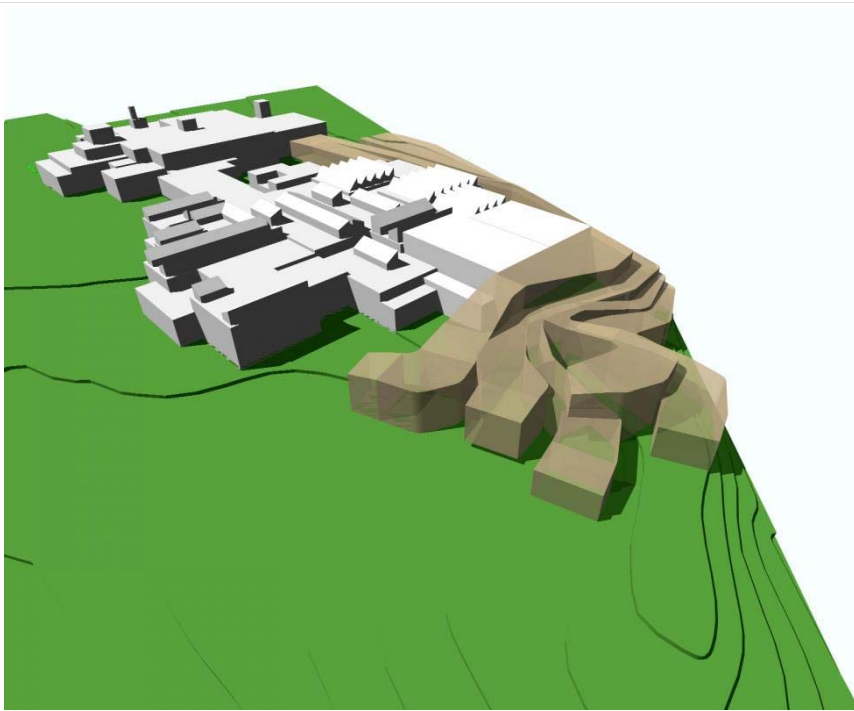


Image courtesy Manuelle Gautrand Architecture



Image courtesy Manuelle Gautrand Architecture

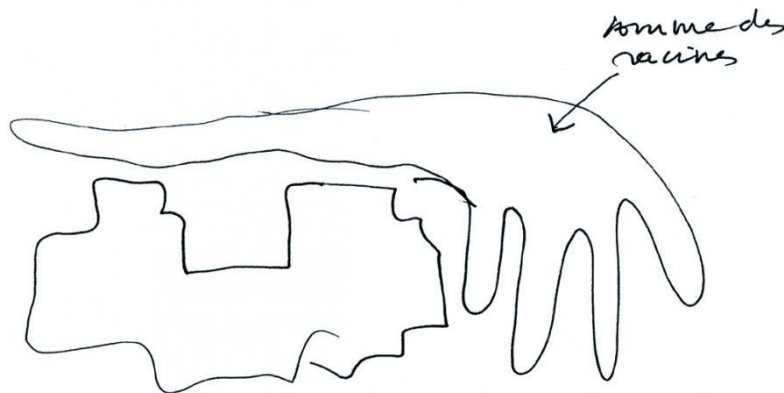


Image courtesy Manuelle Gautrand Architecture

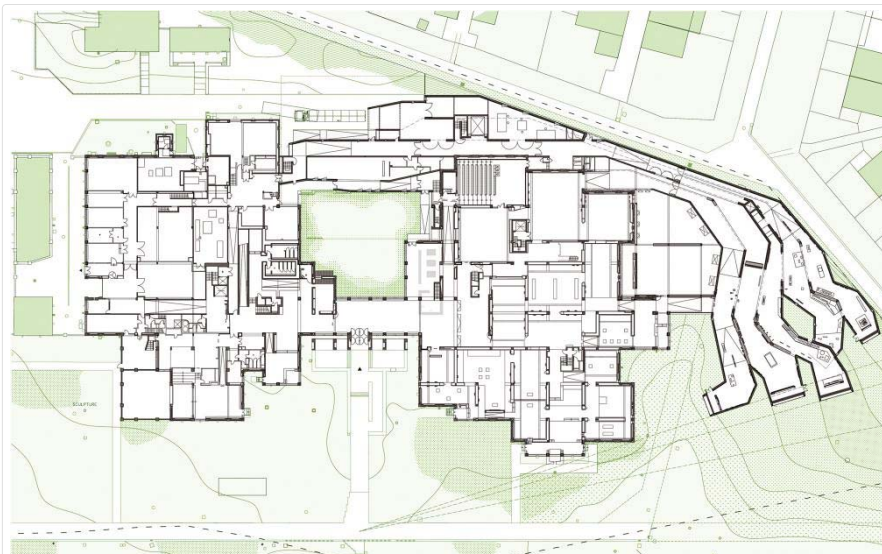


Image courtesy Manuelle Gautrand Architecture





Image Courtesy © Max Lerouge - LMCU



Image Courtesy © Max Lerouge - LMCU



Image Courtesy © Philippe Ruault



Image Courtesy © Max Lerouge - LMCU



Image Courtesy © Max Lerouge - LMCU



Image Courtesy © Max Lerouge - LMCU



Image Courtesy © Vincent Fillon



Image Courtesy © Max Lerouge - LMCU



Image Courtesy © Max Lerouge - LMCU



Image Courtesy © Max Lerouge - LMCU



Image Courtesy © Max Lerouge - LMCU



Image Courtesy © Max Lerouge - LMCU



Image Courtesy © Vincent Fillon



Image Courtesy © Max Lerouge - LMCU



Image Courtesy © Max Lerouge - LMCU



Image Courtesy © Max Lerouge - LMCU



Image Courtesy © Max Lerouge - LMCU



Image courtesy Manuelle Gautrand Architecture



Image courtesy Manuelle Gautrand Architecture

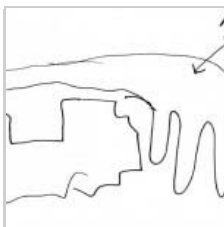


Image courtesy Manuelle Gautrand Architecture

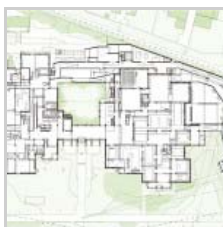


Image courtesy Manuelle Gautrand Architecture

Related posts:

Water + Life Museum by  
LG Architects in Hemet,  
California

Paris Elementary School  
by Ameller, Dubois  
Associés

Extension to the Denver  
Art Museum, Frederic C.  
Hamilton Building in  
Colorado by Studio  
Daniel Libes...

Contact [Manuelle Gautrand Architecture](#)

Tags: [France](#), [Villeneuve d'Ascq](#)

This entry was posted on Tuesday, April 2nd, 2013 at 7:47 am and is filed under [Art Center](#), [Museum](#). You can follow any responses to this entry through the [RSS 2.0](#) feed. You can [leave a response](#), or [trackback](#) from your own site.

## Profile

[Sign in with Twitter](#) [Sign in with Facebook](#)

or

Name

Email  Not published

Website



CAPTCHA Code \*

Comment

☐ Notify me of follow-up comments by email.

☐ Notify me of new posts by email.

☐ Notify me of follow-up comments via e-mail

Post It



© 2013 Internet Business Systems, Inc.  
595 Millich Dr., Suite 210, Campbell, CA 95008  
+1 (408) 850-9202 — [Contact Us](#), or visit our other sites:  
[TechJobsCafe](#) [EDACafe](#) [GISCafe](#) [MCAD Cafe](#) [NanoTechCafe](#) [ShareCG](#)  
[Privacy Policy](#)