

# Town houses & more

Sibylle Kramer

BRAUN





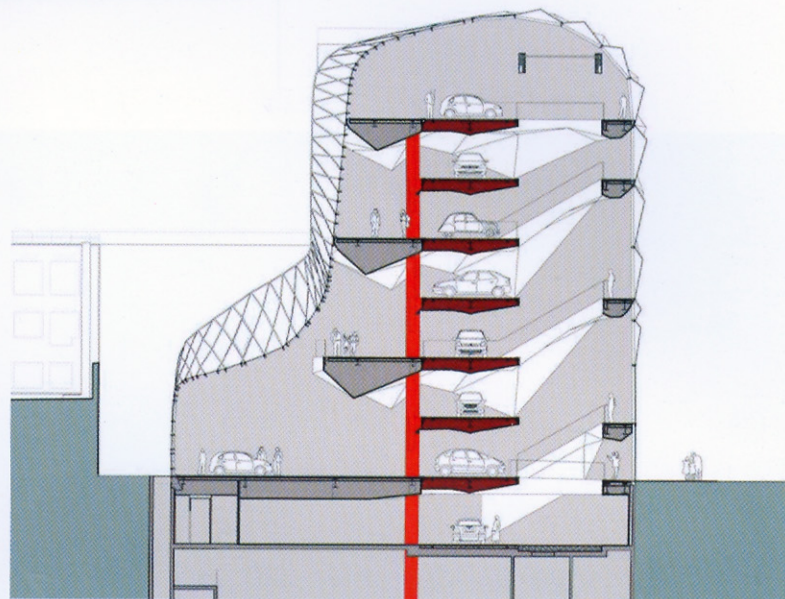
↑ | Top level  
→ | Exterior view

## C\_42

Paris

On the street level, the glass façade will be minimalist and demonstrate a certain rigor with its flatness and use of large rectangles. However, the introduction of the chevron will signal the start of much more original design, with lozenge shapes, triangles, and chevrons. The building appears increasingly three-dimensional towards its top with the introduction of prisms that add new depths to the design. Finally, the top section of the new building will resemble a large glass sculpture, reminiscent of origami in its complexity. The chevron will remain present yet discreet, becoming less defined and increasingly suggested in the overall form. It will be almost subliminal in this exciting project which is midway between a building and a fine art sculpture.





- ←← | The central red mast  
 ← | Platforms  
 ↑ | Transverse section  
 ↓ | View from the interior to the street

