



城市建筑

工业建筑遗产保护与再生的“临时性使用”模式

——以瑞士温特图尔苏尔泽工业区为例

英国工业遗产保护区的保护复兴经验与借鉴

——以纽卡斯尔泰恩本河谷保护区为例

天津市塘沽南站价值与保护更新探析

工业建筑遗产保护与更新研究

——青岛1919的前世与今生

工业遗产保护

3. 2012 No. 90

CONSERVATION OF INDUSTRIAL HERITAGE

邮发代号: 14-23 www.ua2004.com

ISSN 1673-0232 (国际标准刊号) CN 23-1528/TU (国内统一刊号) 定价: 25 RMB

法国巴黎折纸写字楼

The Office Building 'Origami', Paris, France

■ Manuelle Gautrand建筑事务所 钱辰伟 译 ■ Manuelle Gautrand Architecture Translated by Qian Chenwei

折纸写字楼坐落于巴黎弗里德兰大街繁华地段，与凯旋门、星形广场咫尺相望。改造工程包括两部分，沿街面宽30m的主楼及其后部夹在两方庭院花园之间的扩建部分。沿街透过建筑底层前厅，视线可以直达主花园。扩建部分私密性较高，设有自助餐厅和会议室。

作者单位：Manuelle Gautrand建筑事务所
(www.manuelle-gautrand.com)
收稿日期：2012-01-13

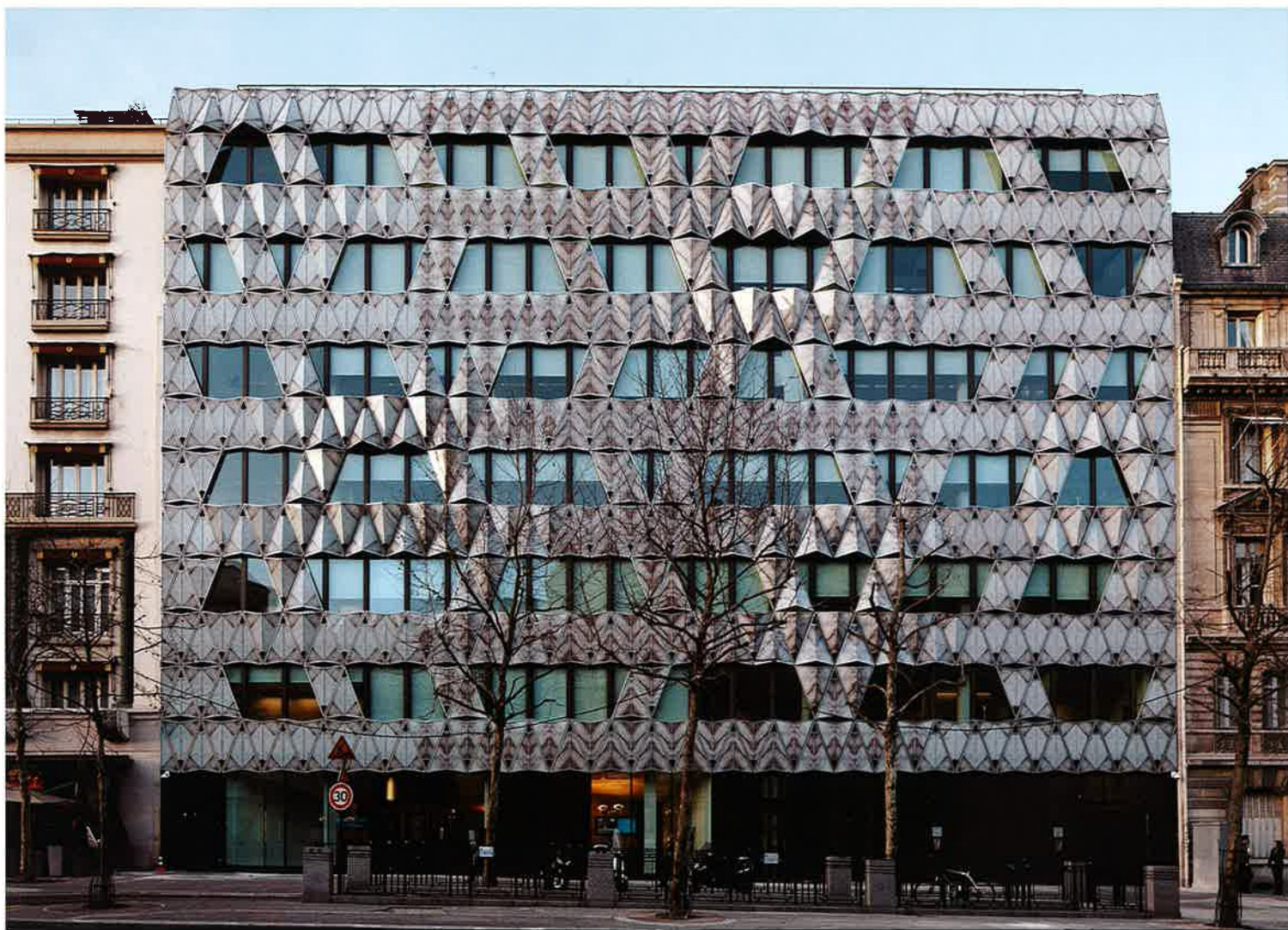
鉴于基址位置的特殊性，设计充分利用周围景观，并保证建筑室内拥有充足的自然光照。主立面大部分覆以玻璃，局部附以大理石图样的表皮。建筑外观酷似巨型折纸作品。精致的褶皱理石表面带给建筑内外愉悦的视觉享受。

建筑表皮为复合结构——双层玻璃外覆以薄薄的大理石纹样表皮。褶皱的板材两两对称安装，仿佛“开启的书卷”，更凸显了理石纹理的设计。内层的半透明表面作为护墙，既保护了隐私又过滤了日

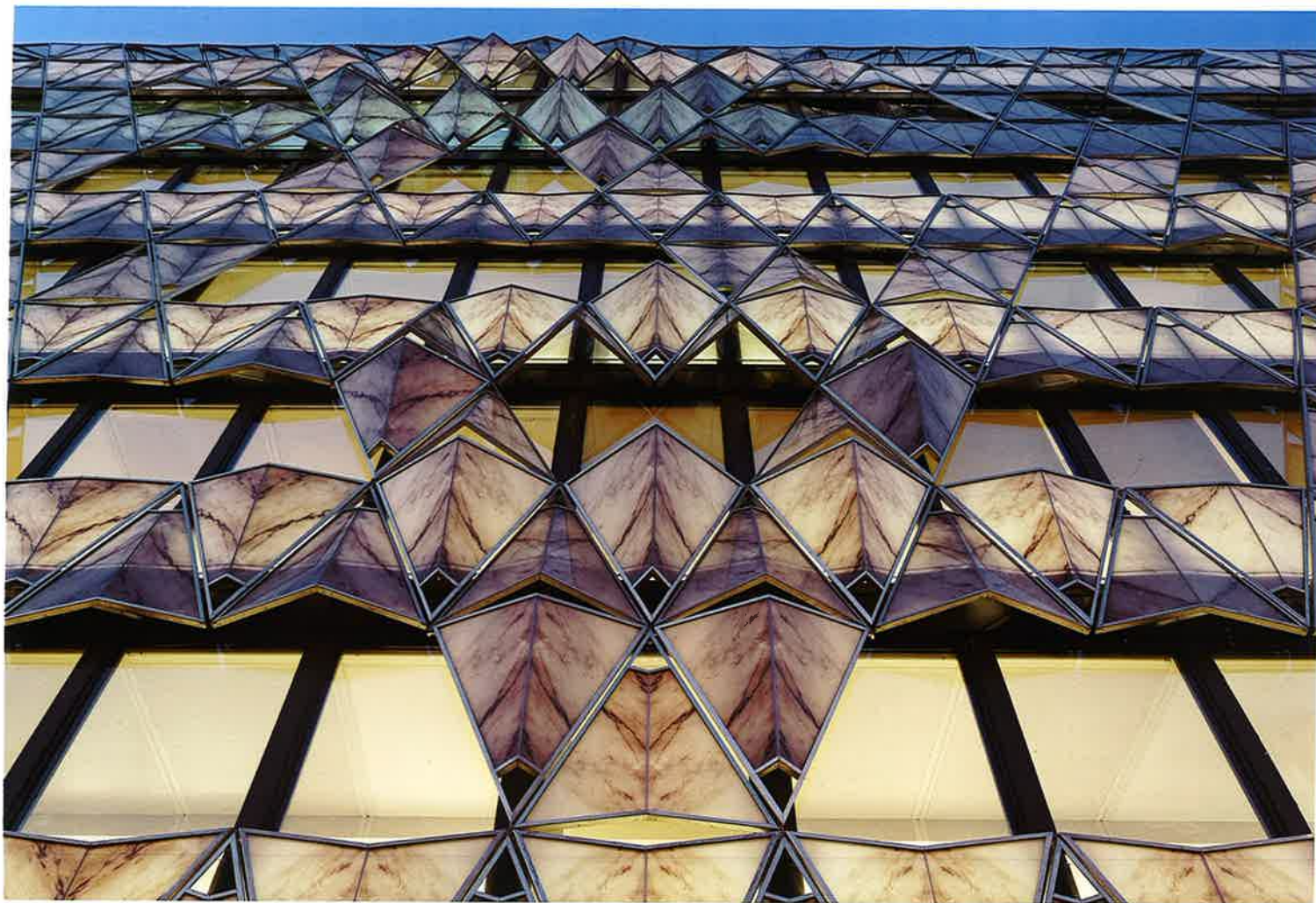
照，营造了温和的室内氛围。

褶皱的理石纹样表皮造就了30m宽正立面的波动效果，两端褶皱程度趋于平缓，以便与毗邻建筑衔接，而中央部分则呈现出精致的浮雕效果。

设计力求将建筑向基地纵深扩建的同时能够享有更多绿化，因此屋顶大面积覆以草坪的办公空间迂回环绕两方庭院花园设置。建筑前厅自然成为了一侧充满城市喧嚣与主立面另一侧相对私密且绿意盎然的两种氛围的交汇之所。■



1 改造后的沿街立面



2 复合结构的建筑表皮

This office building stands on avenue Friedland, in the immediate vicinity of the Arc de Triomphe and Place de l'Etoile, in a luxurious Parisian neighborhood. The project was implemented in two parts: the main building on a 30 meter-wide stripe on the avenue, and an extension in the rear, between two courtyard gardens. At the ground floor level, the lobby plays on transparency between the street front and the main garden. The building in the rear of the lot is more private, and it is there that the cafeteria and meeting rooms are laid out, with garden space on both sides.

The unusual location of the site led us to design a project that would embrace and take advantage of the view and immerse into the natural light. An emblematic showcase of the building – the main facade is mostly glass, partially covered with a second-skin of screen-printed marble pattern. The rendered effect is a tremendous origami and the view of this delicate folded marble can be enjoyed

both from exterior and interior of the building.

The panels are composite, a film of marble mounted on a twin layer of glass. The symmetrical panels that are folded and assembled by two form an "open-book" pattern and thus highlight the design of the veins of the marble. This second skin is translucent and acts as a breast wall to ensure privacy as well as filter daylight, creating a soft interior atmosphere.

Marble folds create a vibration along the 30 meter-long front. At both ends, in continuity with the facades of neighboring buildings, the origami becomes calmer and flattens out. But in the central part it forms a delicate bas-relief.

The project then develops into the depth of the site with the same objective of clarity while adding a strong presence of plants. The offices roofed with large lawns weave around the two courtyard gardens. The lobby functions as a meeting point of these two atmospheres – the urban and sophisti-

cated of the main facade, and the more private and verdant of the other side of the building.

项目概况

项目名称：折纸写字楼

建设地点：法国巴黎弗里德兰大街36号

业 主：Gecina

设计单位：Manuelle Gautrand建筑事务所

结构专业：Khephren

表皮设计：Arcora

建筑面积：5 800m²

设计时间：2006年~2010年

建成时间：2011年3月

图纸版权：Manuelle Gautrand建筑事务所

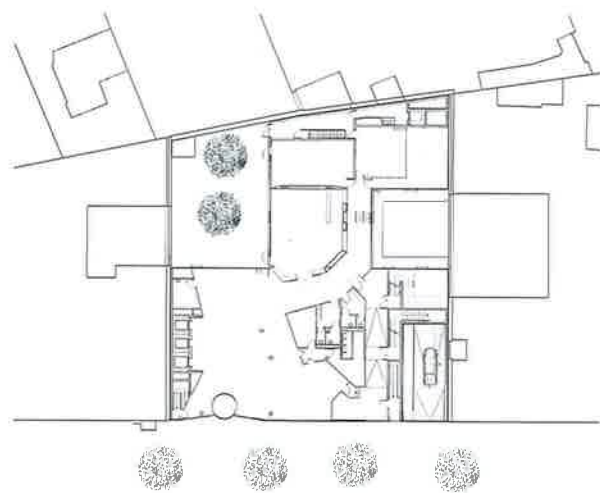
摄影：Vincent Fillon



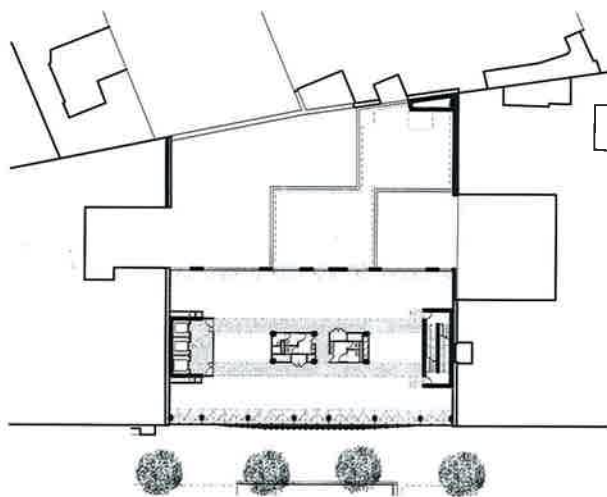
3 夜幕下的折纸表皮



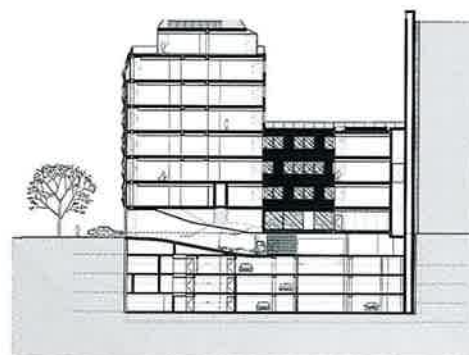
4 顶层室外平台



5 一层平面



6 五层平面



7 剖面



8 走廊



9 入口接待



10 公共交流空间



11 会议室