

On-trend tabletop settings to try now P108

realiving

Imaginative Interiors

BEAUTIFUL BUYS

Everything you
need to style the
ultimate vanity

Inside the colourful
world of Missoni

Australian kitchen & bathroom designs

Gorgeous surfaces, smart storage & the latest accessories

Sky's the Limit



Guided by childhood memories of southern France, a leading architect recast her moody Paris apartment as a free-flowing, sun-soaked sanctuary

photography gaelle le boulicaut | design manuelle gautrand interiors | words dan f. stapleton & jeremy callaghan

homes

Supporting roles Many of the objects architect and homeowner Manuelle Gautrand chose for this area are white or clear, allowing the colourful elements to take centre stage. The mottled glass lamp is vintage Murano Mazzega, the 1970s glass coffee table is by Willy Ballez and the wall lights are by Flos. A Brink & Campman rug adds another shade of pink to the mix. **Seventies scene** For continuity, Manuelle opted for pieces from the 1970s, including the second-hand bamboo and rattan bar stools in the kitchen (opposite). →



who lives here?

Architect Manuelle Gautrand and her husband.
Manuelle-gautrand.com | @manuellegautrand



MANUELLE GAUTRAND HAS LIVED IN PARIS for more than two decades, and in that time her eponymous firm has made quite a mark on the city. But the European Prize for Architecture winner remains a southerner at heart. 'As someone who was raised in Marseille, I am particularly attached to the qualities of colour and natural light,' Manuelle says. So, when her two grown children recently moved out of the family's top-floor apartment in the Marais district, she decided it was time to infuse the historic home with some Mediterranean charm.

DIVINE LIGHT Manuelle and her husband had two main objectives: to improve the apartment's flow and bring in natural light throughout the day. Their first goal was achieved simply by removing some of the internal walls, but the second required serious thought. After careful calculations, Manuelle realised that the apartment's sloped roof could accommodate a long skylight, stretching from east to west. 'It was my chance to create a relationship between the home and the sky,' she says. To her delight, her development application was approved.

WONDER WALL 'The glass roof means the northern wall is now enlightened all day,' says Manuelle. She painted the wall in what she calls 'Pollock Yellow', referencing the vibrancy of the abstract Impressionist's paintings. Pale oak floorboards enhance the sense of light and space and two more hero colours – baby pink and celadon green – channel the breezy *joie de vivre* of the French Riviera.

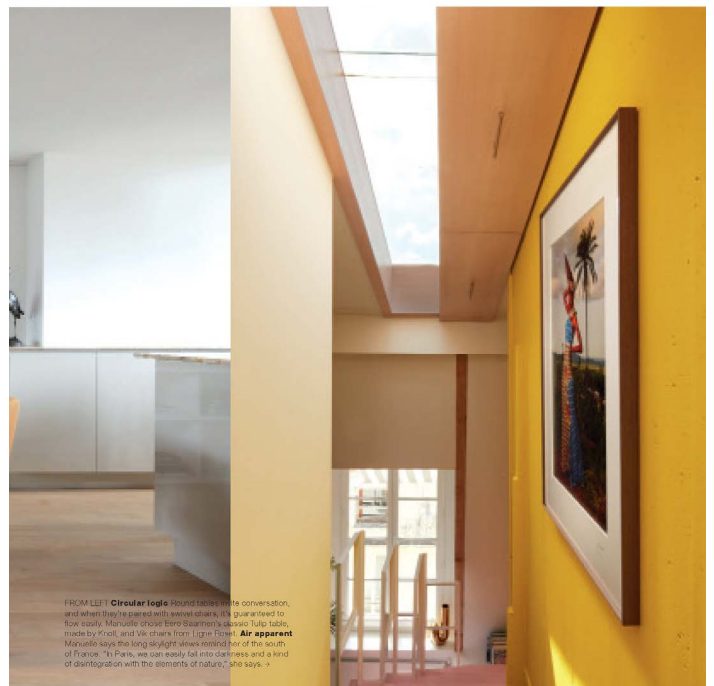
MOOD SWING Rather than enforce one style code, Manuelle chose to experiment with different moods in her home. Upstairs, in a nod to Japan, she applied a dark varnish to the floorboards. 'It gives a little bit more intimacy in the upper level,' she says, 'and the glossiness means that, even if it's quite dark, there's always light reflecting.' Downstairs, in the kitchen and dining areas, travertine surfaces and an heirloom commode nod to the apartment's 17th-century roots. After all, says Manuelle, 'In the Marais, history is in the air'. ●

homes

Leading ladies On the dining area walls, prints depicting prominent women nod to Manuelle's eclectic taste. The horseshoe lights are by Ago Lighting, and a Le Corbusier light is above the sideboard. **Worlds collide** Manuelle (opposite, left), one of France's highest-profile architects, has a knack for bringing historic buildings into the present. **Pay homage** The apartment is dotted with pieces by French icons, including the Nemo 'Lamp de Marseille' by Le Corbusier in the kitchen (opposite, right). A travertine kitchen island is positioned in the centre of this room so that Manuelle could interact with family and friends while cooking. "It encourages us all to come together in the kitchen," she says. →



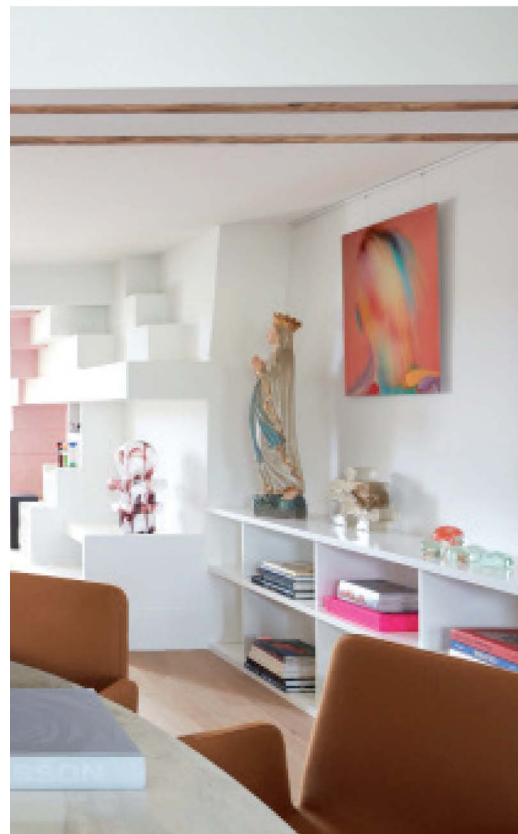
style tip Positioning art off centre, as seen here, can prevent a space from feeling too rigid or austere



FROM LEFT **Circular logic** Round tables invite conversation, and when they're paired with swivel chairs, it's guaranteed to fork easily. Manuelle chose Eero Saarinen's classic tulip table, made by Knoll, and Vle chairs from Ligne Roset. **Air apparent** Manuelle says the long skylight sleeves inspired her of the south of France. "In Paris, we can easily fall into darkness and a kind of disaffection with the elements of nature," she says. >



Shape shifting The wrap-around Eski sofa by Ligne Roset is upholstered in an enticing deep green fabric that harmonises with the indoor plants, including a potted palm reminiscent of Marseille. The corridor on the left, a family bathroom, and the Virgin Mary statue on the right both date from the mid 1900s.



ways to dabble in visual drama

- 1 Crisp white walls and pale floorboards give vividly-coloured furniture and arresting artworks room to breathe.
- 2 Using multiple shades of the same colour, such as the brown tones in this space, can help create variety without jostling for attention.
- 3 Natural materials, including marble and wood with a pronounced grain, are a great way to engage the eye but not overwhelm it. →

Sunny disposition A wall of mirrors makes the guest bedroom feel open and spacious while offsetting the dark floor. The rug is by Begüm Candaş Özgür from Turkey, the blanket is Tibetan and the slim overhead light is from Nemo Lighting.



shop it! Be inspired by the curved shapes and retro vibes of Manuelle's home



1 Adams chaise sectional **sofa** in Deep Teal Velvet, \$1899, Castlery. **2** &Tradition 'Flowerpot' VP1 **pendant** in Beige Red, \$500, Cult. **3** Nemo 'Lampe De Marseille' **lamp** in Whitewash, \$1200 for mini, Cult. **4** HK Living ceramic **vase** with ribbed base in Rustic, \$89, House of Orange. **5** Copenhagen acacia wood **serving bowl**, \$89 for small, West Elm. **6** Muuto 'Kink' **vase** in Blue, \$320, Smallable. **7** Designer Rugs 'Venus Series' **rug** in Red (1.4m x 2.2m), \$559, The Feelter. **8** Coucou **vase** in Green, \$129, Maison Balzac. **9** Como marble **dining table** in White Marble, \$2290 for 1.2m, Coco Republic. **10** Organic cotton velvet rectangle **cushion** in Turmeric, \$80, In Bed. **11** Tekla whipstitched virgin-wool **blanket**, \$258, Matchesfashion. **12** Gubi 'TS' round console **table** in Green Marble/Brass, \$1549, Surrounding. **13** Kartell 'Componibili' **storage unit** in White, \$190 for small, Amara. **14** Cosmic Egg **artwork** (50cm x 60cm), \$3200, Daniel O'Toole. **15** AYTM 'Stilla' **rug** in Amber, \$536, Royal Design. **16** Bridge **coffee table**, \$499, Freedom.

still-life styling alice terrace



Colours and finishes

FROM LEFT Wall **paint** in Crush, \$89 for 4L, Tint. Wash&Wear **paint** in Pastel Mint Half, \$82.40 for 4L, Dulux. Wall **paint** in Canary, \$135 for 4L, Porter's Paints. Georgian Bluffs **surface**, from \$500 per sq m, Caesarstone.