

<https://concreteplayground.com/sydney/travel-leisure/dog-friendly-sydney-brisbane-road-trip>

This newly opened precinct combines the traditions of the past with the promises of the future.

Sydney's second city is now home to a bustling new community, cultural and civic hub: **PHIVE**, located in the heart of Parramatta's CBD.

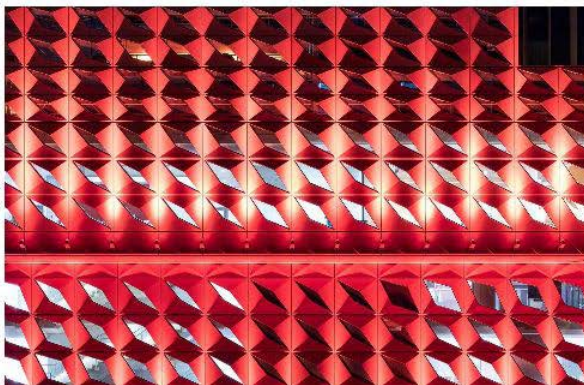
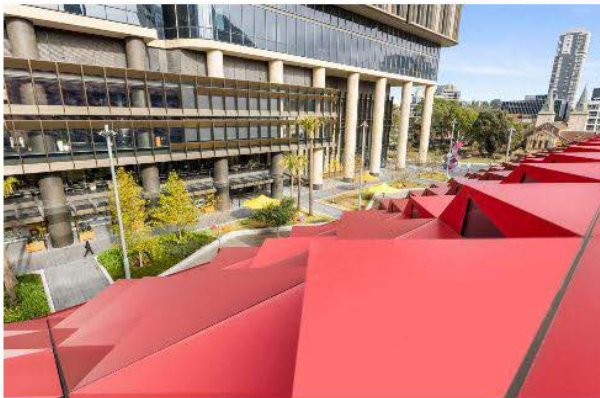
The eye-catching architectural marvel boasts world-class amenities, crafted with the vibrant community in mind. Whether you're a student, a professional, a resident, or a pleasure-seeker in Parramatta, this new community centre offers an array of spaces designed to enrich your daily experiences. From its iconic library to the all-new council chamber, PHIVE is the epitome of community-centric design.

Parramatta, a city that has undergone a remarkable metamorphosis in recent years, is shedding its former image as a mere commuter hub for Sydney's CBD. Nestled proudly at 5 Parramatta Square, PHIVE stands as the crown jewel of this thriving urban precinct, complete with its glimmering ruby-coloured roof. It is a place where the community can learn, find inspiration, forge connections, foster collaboration, and conduct business.

PHIVE's design is the brainchild of award-winning architect Manuelle Gautrand and Australian firms Lacoste+Stevenson and DesignInc. It is a striking architectural marvel designed with inclusivity and accessibility at its core. This smart, sustainable building achieves net zero carbon emissions and is on track to earn its green star certification. Its biophilic design integrates with Parramatta's heritage to create a new standard for public buildings in Australia.

The striking six-storey building features a unique roof that is designed to follow the winter sun's path, bathing the public square below in year 'round sunshine. Indirect sunlight from the roof reduces the building's heat load, and its bold crimson hues pay homage to local flora — waratahs and grevillea. With a mixed-mode ventilation system, giant louvres respond to weather conditions, filling the building with fresh air and natural light.

PHIVE pays homage to the area's rich history while seamlessly integrating with the heritage-listed Parramatta Town Hall. The new entrance on the ground floor's Civic Hub lobby creates a harmonious connection, uniting the buildings into a single, cohesive civic space. On level three's Western Terrace, you can admire the old town hall roof from a cantilever suspended over the heritage structure.

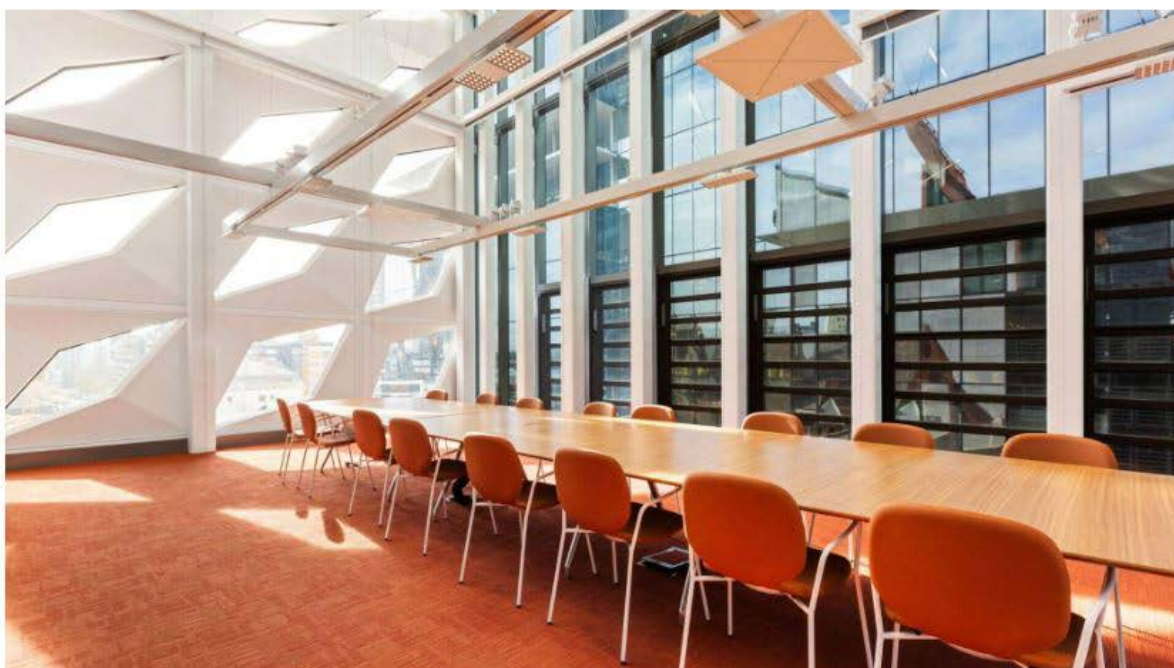


PHIVE features a range of community spaces for all ages and walks of life. Level three is a haven dedicated entirely to the community, offering a diverse range of spaces and activities. This includes the Active Wellness Centre, meeting rooms, maker spaces, sound recording studios and technical suites.

There are multigenerational workshops like the over 55s Art and Movement classes, Mums and Bubs fitness sessions, technology classes for those over 70, author talks and architecture and art tours. There are also spaces available for hire for private and public events.

Artistry thrives within PHIVE's walls, with captivating public artworks and displays adorning the precinct. Prepare to be delighted by the *Parramatta Road* mural by Australian artist Tom Thompson, displayed between levels three and four. Delight in the thoughtfully commissioned sculptural and digital artworks, curated by the City of Parramatta, adding a vibrant touch to this creative hub.

PHIVE pays respect to Parramatta's Indigenous heritage with The Keeping Place. In consultation with and at the request of the Dharug Traditional Custodians, this space provides a safe sanctuary for the return of cultural artefacts from museums and other collecting institutions, allowing First Nations culture to be celebrated and conserved.



The original library in the centre of Parramatta was demolished in order to create space for the new public square. PHIVE isn't just a replacement for the original library – with its vibrant community spaces it's now a cultural hub for the community through which the old library lives on.

Levels one and two are home to the new state-of-art City of Parramatta library featuring an extensive book collection (over 65,000 titles!), digital resources, a dedicated children's library with story-time sessions during the school holidays, and study areas.

For those seeking deeper insights into local history and research, the Local Studies Research Library and Research Lab beckon. Step inside and unlock a treasure trove of heritage collections, including reports, media collections, photographs, records and historical objects.



Come say hi to PHIVE! Access to PHIVE building is free and open to the public 9am – 8pm Monday to Thursday and 9am – 5pm Friday to Sunday (Closed Public Holidays) at 5 Parramatta Square, Parramatta.

To find out more about PHIVE, visit the [website](#).

Images: Brooke Zotti, Brett Boardman, Cassandra Hannagan and Sara Vita.