

# ALMA TERRA

알마 테라

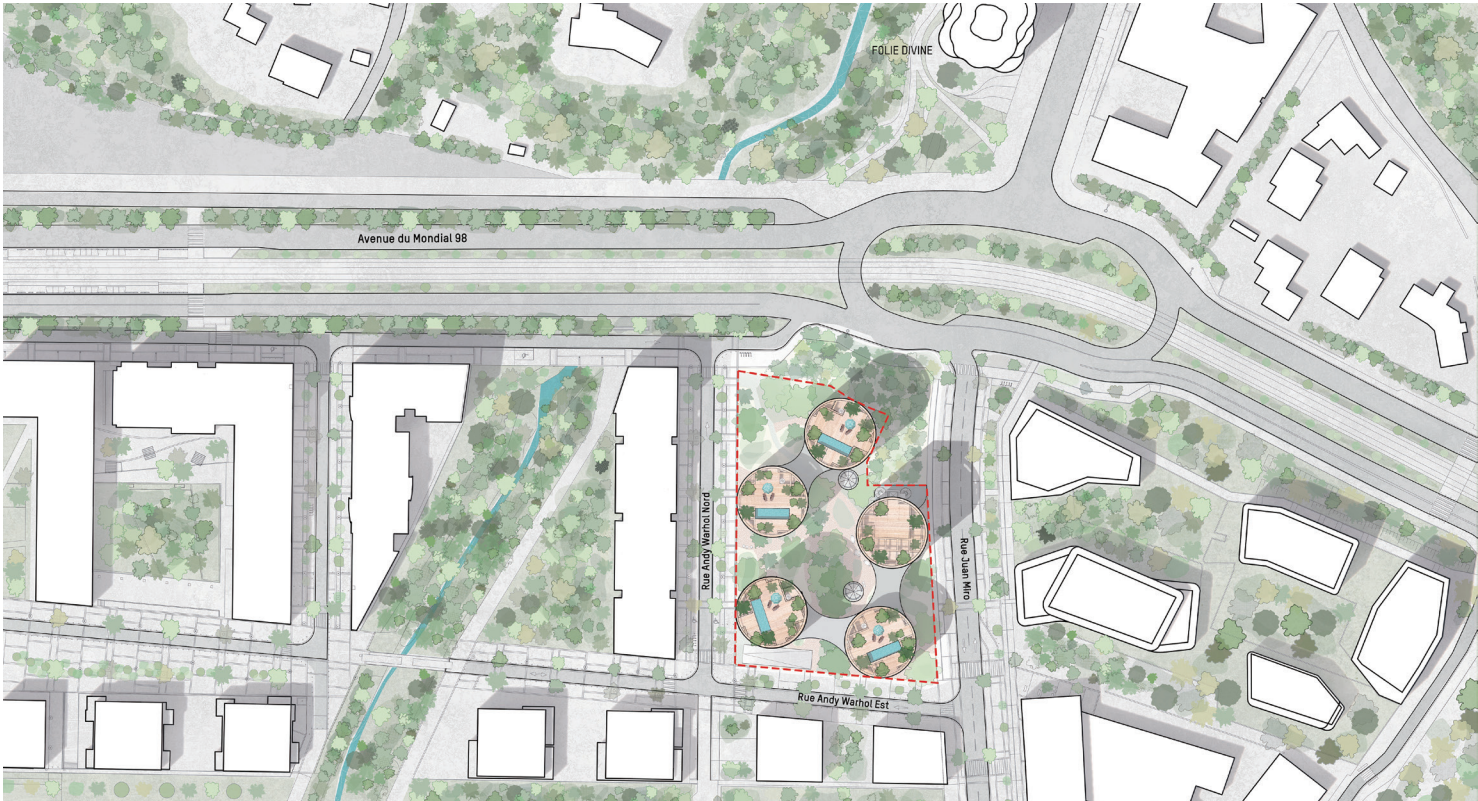
MANUELLE GAUTRAND ARCHITECTURE + ESTEBE & CATHALA

마누엘 고트랑 아키텍처 + 에스테베 & 카탈라

The city of Montpellier launched a series of consultations with the aim of building a new generation of ‘follies’, following the resounding success of the first two, the Arbre Blanc and the Folie Divine. Today even more than in the past, the objective is to offer future residents a truly ecological place to live. In order to create this Folie, we fixed ourselves several challenges, starting with a highly contextual insertion into the given site. The result was a vision of round forms, taking their place as an echo of those of the Folie Divine. Several circular volumes are interconnected and incite a fertile dialogue with the Folie Divine. We also want to cultivate a spirit of small communities of residents within each volume (about 30 dwellings, no more), which led us to a series of relatively small volumes: the result is a cluster of five circular buildings. Each volume skims the edges of the site, without ever imposing continuous alignments. The project is porous, permeable to the gaze, but not only that. The round forms invite you to enter, there is no boundary fence: we want the public to be able to come into the gardens at the centre of the cluster, to walk through the whole development. We want a project that is like public space: it should be visited, occupied, photographed, studied, in a grand spirit of generosity and conviviality.

Location : Montpellier, France | Function : Residential facility | Total floor area : 8,545m²

위치 : 프랑스 몽펠리에 | 용도 : 주거시설



Site plan

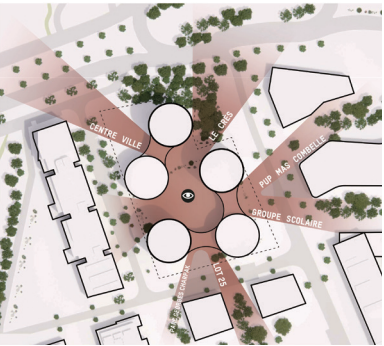
몽펠리에 시는 아르브르 블랑과 폴리 디바인의 성공에 이어 차세대 ‘폴리’를 건설하기 위해 일련의 협의를 시작했다. 과거와 마찬가지로 오늘날에도 미래 주민들에게 진정한 생태적 삶의 터전을 제공하고자 한다. 이 폴리를 만들기 위해 맥락에 맞게 주어진 부지에 건물을 삽입하는 것부터 시작하여 몇 가지 과제를 해결했다. 그 결과 폴리 디바인을 반향하는 둥근 형태로 계획되었다. 여러 개의 원형 볼륨이 서로 연결되어 폴리 디바인과의 풍요로운 대화를 이끌어낸다. 또한 각 볼륨에 소규모 거주민 커뮤니티(약 30가구)를 구성하여 5개의 원형 건물로 이루어진 클러스터가 조성되었다. 각 볼륨은 연속적으로 정렬되기보다는 대지의 가장자리를 지나간다. 이 프로젝트는 다공성으로 시선이 투과할 수 있으며, 둥근 형태가 안으로 들어오도록 유도하고 경계 울타리가 없다. 누구나 클러스터 중앙에 있는 정원에 들어와 개발 전체를 걸을 수 있기를 바란다. 공공 공간과 같은 프로젝트는 너그럽고 즐겁게 방문하고, 점유하고, 사진에 담아내고, 연구할 수 있다.



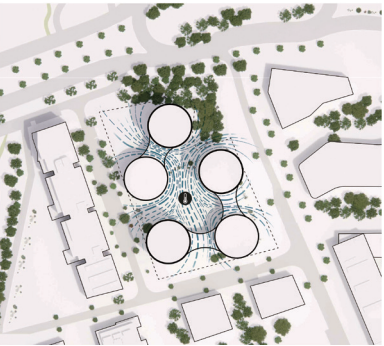
## ■ Design Process



– At the centre of the project, a form of oasis is created in the continuity of the grove located North East: it establishes a fertile ecological continuity between the different gardens.



– The organic form of the built volumes brush each other without ever creating a continuous alignment which makes it possible to multiply the porosities and visual perspectives.



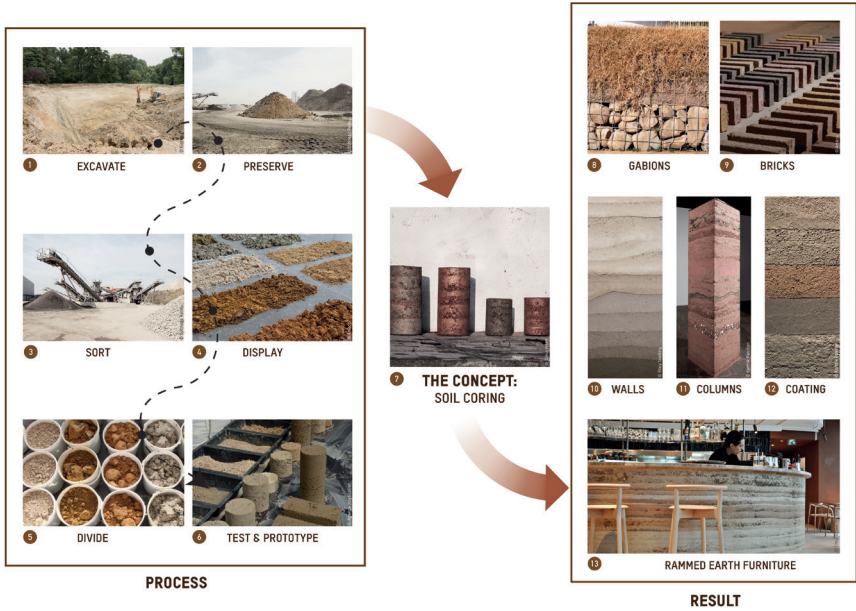
– The position of the towers naturally creates an island of coolness which can ventilate the public space on warm days.





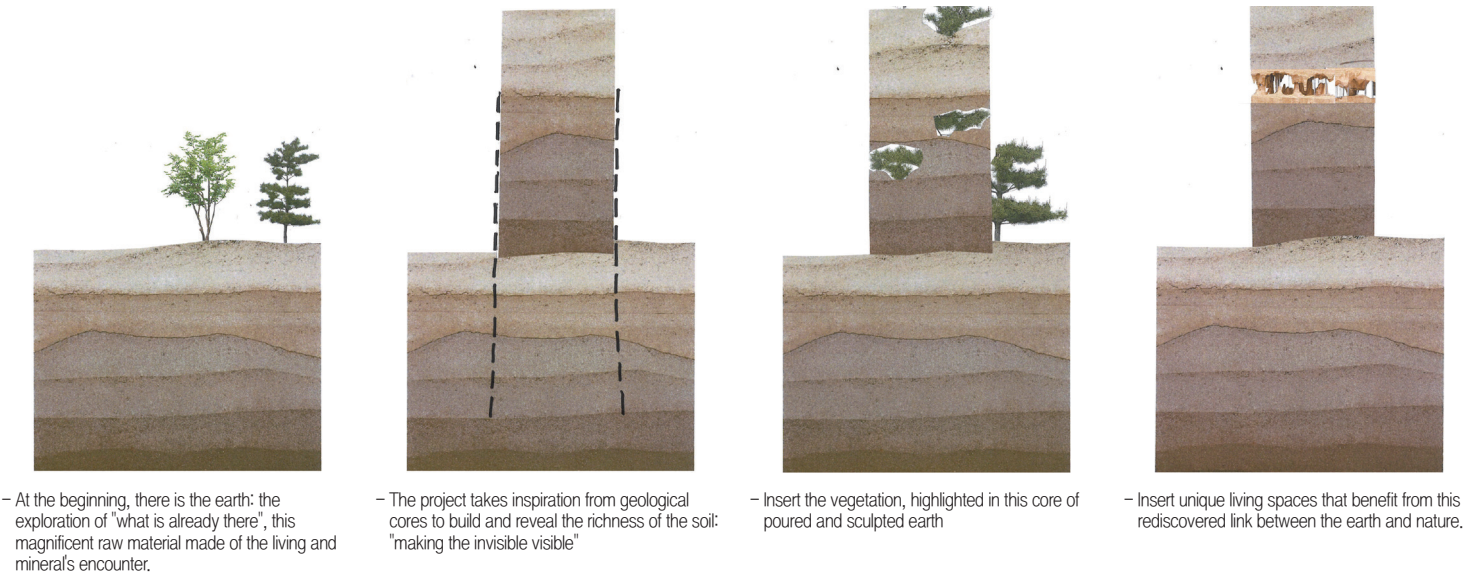
■ Design Concept I

- Sustainability, towards a passive project thanks to the site's soil



■ Design Concept II

- The project as a manifesto on earth



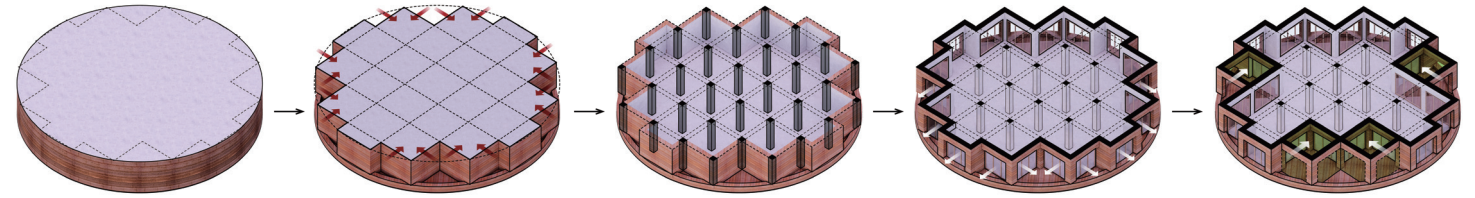




Elevation

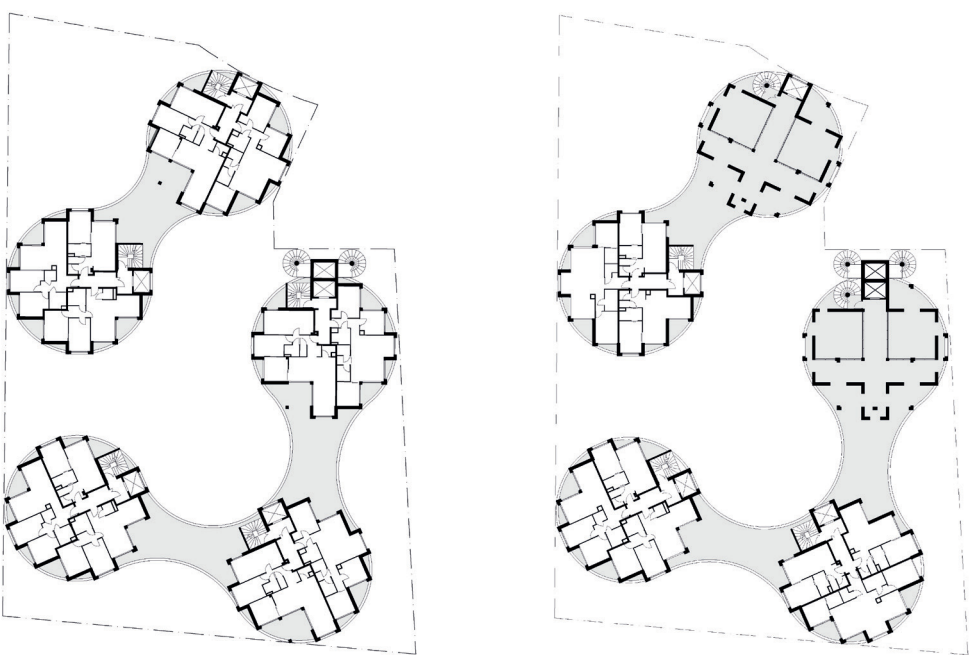
■ Axonometric

- The loggia, founding element of the project for more well being



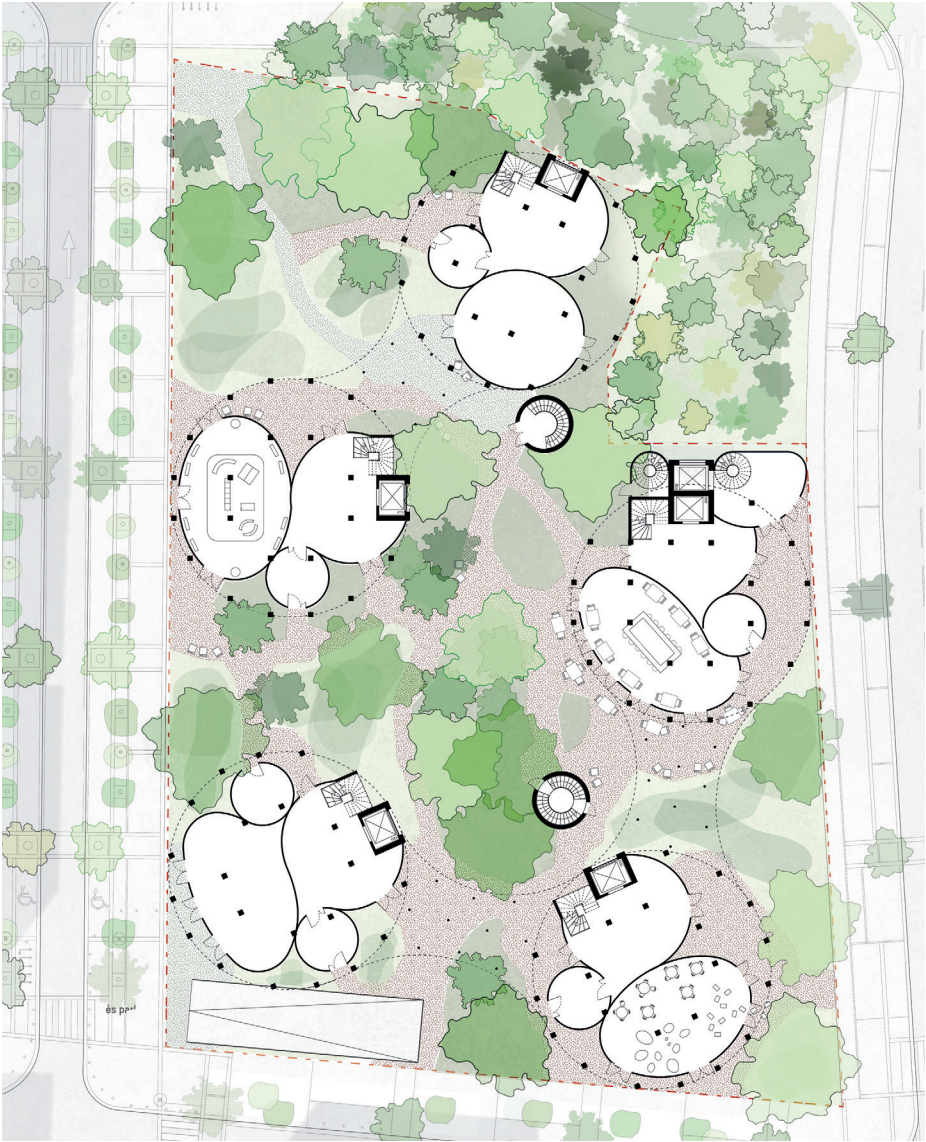
- 1. The starting volumetry
- 2. Like a sculptor, terraces are carved out from the starting volumetry
- 3. Each terrace is an alcove, protected from the views of the other apartments
- 4. The bay windows open in two directions, offering multiple orientations to the apartments
- 5. From the principle, the terraces expand towards the center of the volume for the largest apartments, offering great living rooms between the inside and the outside. By maintaining the posts and beams, loggias are created; any form of partitioning can be created which makes the space very flexible.





Floor plan - R+2

Floor plan - R+4



Ground floor plan