

Published by Isabelle Lomholt updated on February 16, 2019

Hyde Park Residence, Amsterdam Housing, Dutch Real Estate, Architecture Images

Hyde Park Residence in Amsterdam

New Accommodation Development in Holland – design by Manuelle Gautrand Architecture

13 Feb 2019

Hyde Park Residence

Architects: Manuelle Gautrand Architecture

Location: Amsterdam, The Netherlands

Hyde Park Residence

The project consists of a total of 400 housing units located in Amsterdam, in the Hyde Park district, whose master plan was produced by [MVRDV](#).



The 400 homes are divided into nine buildings that make up "thematic" houses, and are organized around a landscaped island core. Each house is the object of a different architectural work, in its colors, its materials, its heights, its volumes, etc. Overall cohesion has been maintained under this apparent diversity, in order to create a harmonious "village" favoring well-being together.





This project develops ambitious goals in environmental terms and integration of new uses.



House 1 / BIG BITE /

The main volume is composed of white bricks. Glazed bricks make up the circulation spaces. This alternation between the white color and the iridescent effect of the glass bricks allow to highlight and value the composition of the apartments, including duplex housing.

The main volume is composed of white bricks.



House 2 / STRIPES AND PLAYFUL HOUSE /

The main volume is covered with large metal and colored panels. The circulation spaces are composed in white brick. This facade treatment creates a joyous architecture, in a panel of tones that echo the other buildings of the "village".



House 3 / BIG LOGGIAS HOUSE /

The facades are covered with large glazed panels, like gigantic windows. They complete the large wooden loggias arranged around the building, giving outdoor spaces privileged to the occupants.



House 4 / LONG TERRACES HOUSE /

The main volume is made of red bricks, reminiscent of traditional buildings in the region. Each unit has a long and wide blue metal terrace, which reminds them of the colors of the sky.



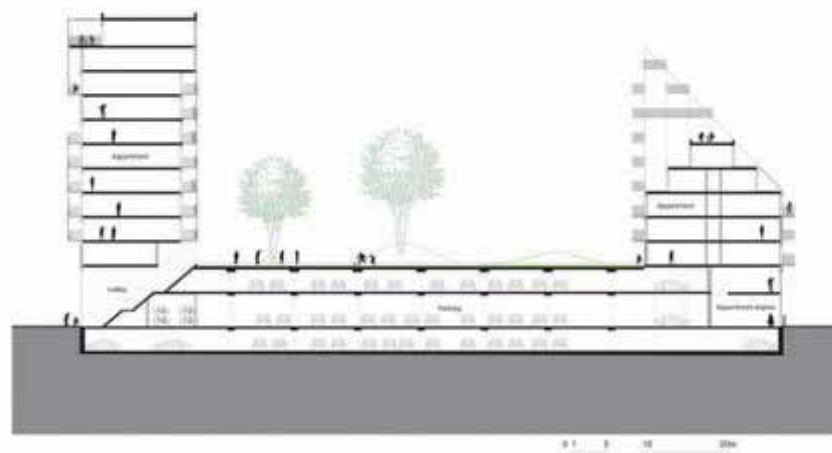
House 5 / EXPRESSIVE SCULPTURE AT THE CORNER /

This corner building is designed as a black brick sculpture, flanked by large cantilevered metal terraces. These terraces sparkle in the sun and add to the expressive effect, to the volumes changing according to the angles and the moments of the day of the building.



House 6 / GREEN HOUSES

The main volume is made of folded stainless-steel panels. The outer terraces and glazed loggias, like small greenhouses, spread around the volume are surrounded by red lacquered bricks.



House 7 / BIG COMMON BITES /

The main volume is composed of white bricks, an echo to the House 1 / BIG BITES. The generous common areas, distributed throughout the building, are made from green metal panels.



House 8 / LOFTS /

This tall and narrow building is designed in red brick. Black inserts mark the circulation spaces and the separations between the different lofts.



House 9 / IN THE GARDEN /

This "house" forms an outgrowth in the heart of islet, which breaks with the relative alignment of the buildings and comes to arrange an opening from the streets. This vast concrete slab forms several green terraces, thought like large spaces overlooking the inner courtyard. The main volume is composed of green metal panels, which echo this function of "garden" interior.



Hyde Park Residence, Amsterdam – Building Information

Design: [Manuelle Gautrand Architecture](#)

City: Country Amsterdam – The Netherlands

Client: Snippe Projecten B.v. And Io B.v.

Local Architect: Inbo (Amsterdam)

Surface: 39.000 sqm

Cost: No

Dates: Studies In Progress – Expect Delivery: 2022

Programme: 400 Housing Block + 250 Parking Lots

Green Design Gold Leed Certification



Credits © Romain Ghomari + © LMNB

Hyde Park Residence in Amsterdam images / information received 130219

[Manuelle Gautrand Architecture](#)

Location: Amsterdam, The Netherlands